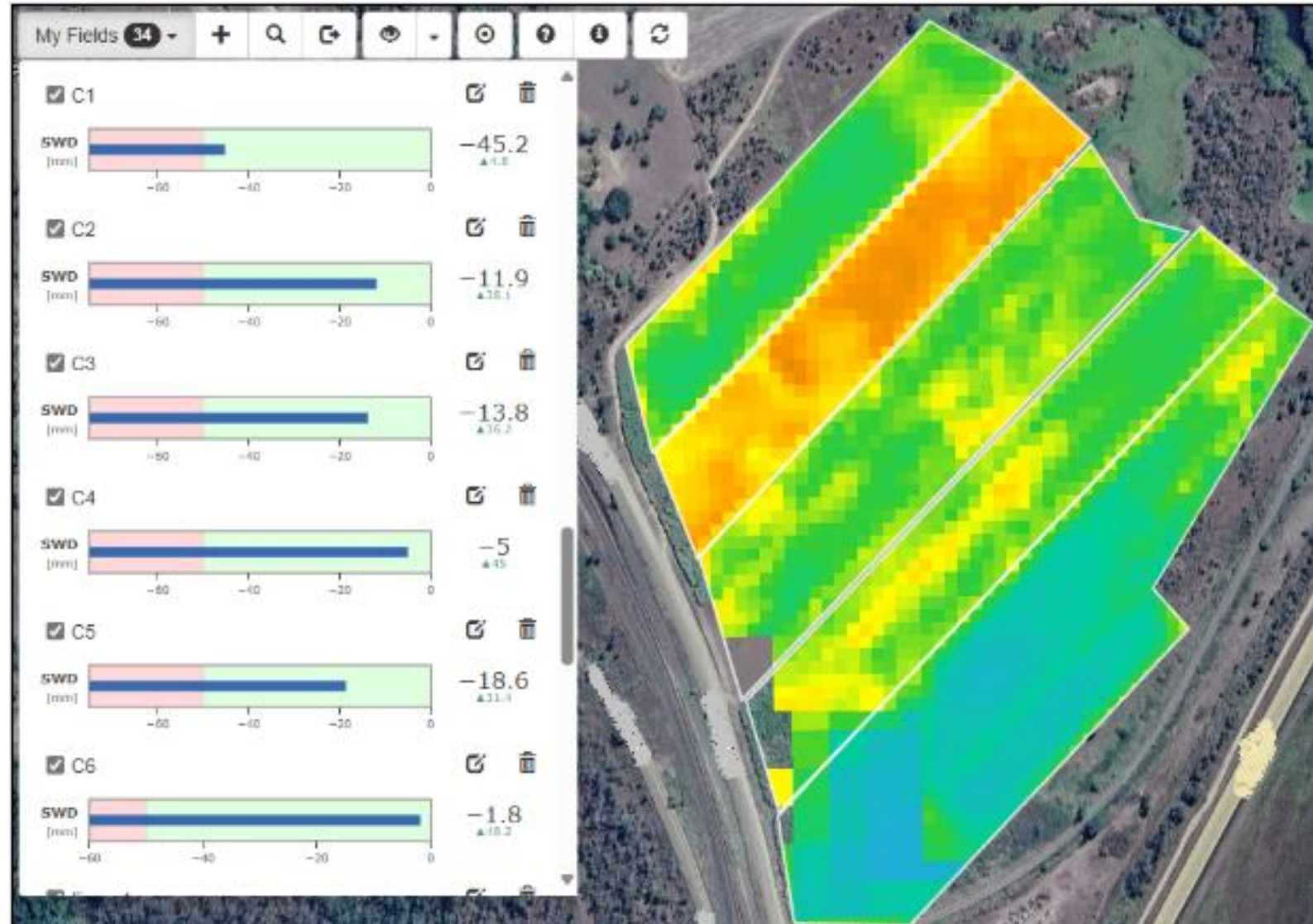


IrriSAT V2



What is IrriSAT V2?

IrriSAT is a free, online irrigation scheduling tool that uses satellite data to provide paddock specific recommendations. It has recently been improved for use in sugarcane.

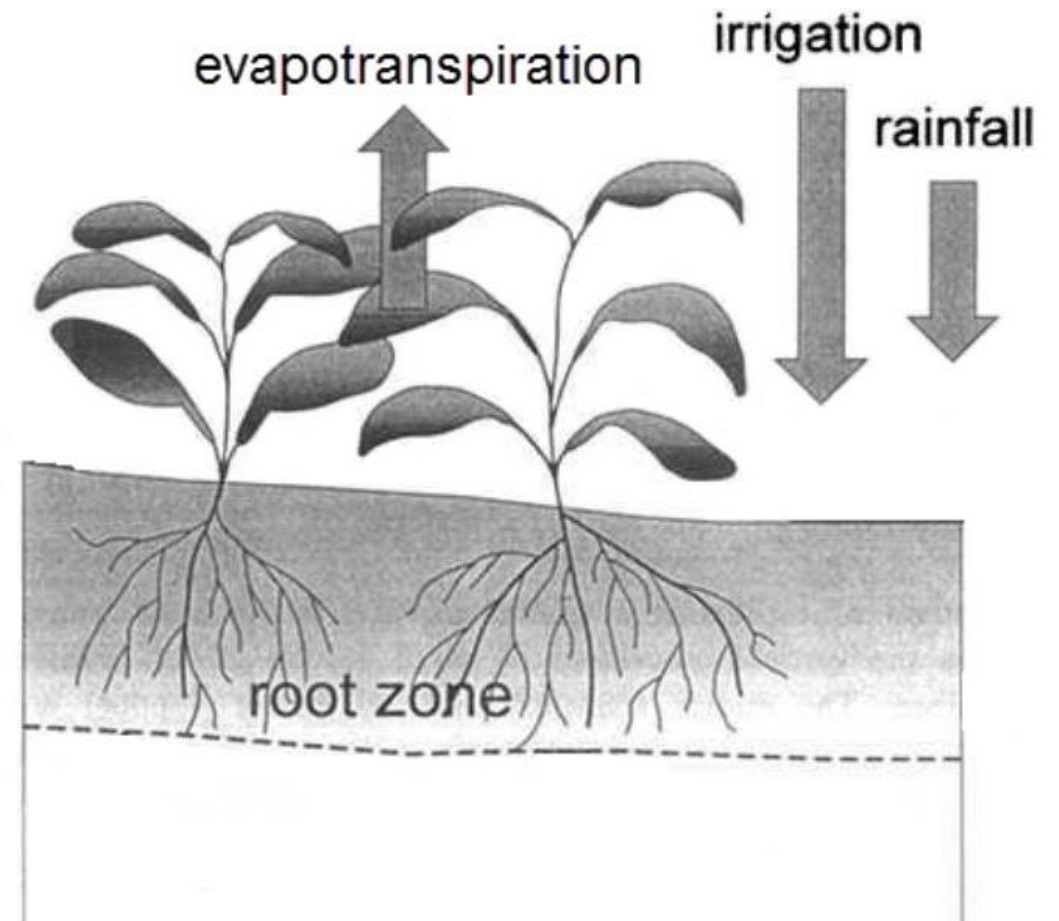


How Does IrriSAT V2 Benefit Growers

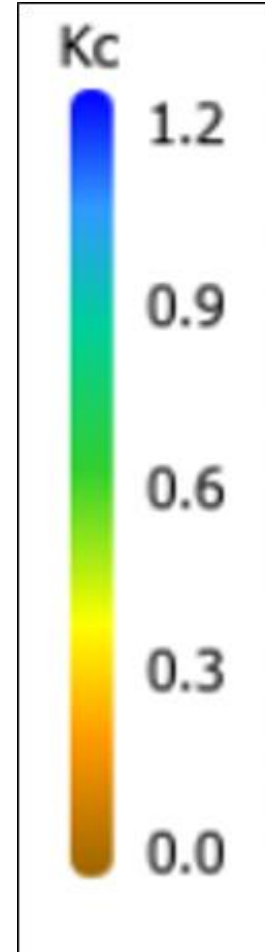
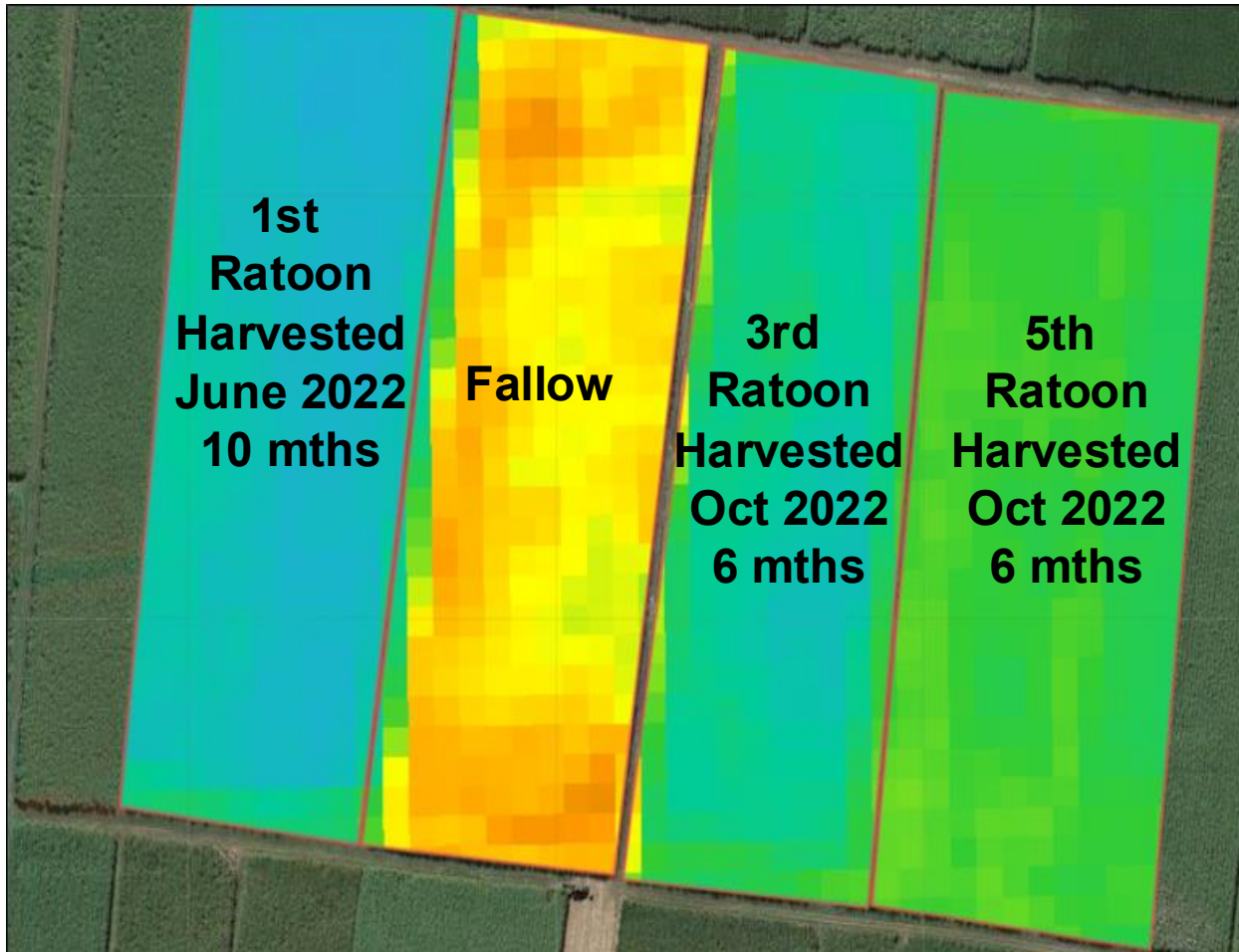
- MIP (Mackay Irrigation Project) led by John Eden, has quantified the economic and environmental benefits of irrigation by working with growers in real on-farm conditions. Case studies were completed to share the importance of irrigating and demonstrate the direct relationship irrigation has to yield increase.
- Improved WUE (Water Use Efficiency) = Improved NUE (Nitrogen Use Efficiency).
- IrriSAT is a system that helps growers become more aware of the importance of CWU (Crop Water Use) on their farm. SRA is supporting growers through the setup of irriSAT to enhance their knowledge and understanding.

Where To Start

1. Go to: [IrriSAT v2 - Weather based irrigation scheduling](#)
2. Log into a 'Google Account'
3. Draw paddocks
3. Enter paddock details
4. Irrisat measures crop canopy closure by satellite NDVI imagery
 - calculating the crop co-efficient (**Kc**)
5. Evapotranspiration (**ET0**) data is sourced from SILO/BoM
6. **Crop water usage is calculated = $Kc \times ET0$**
7. Soil water deficit is tracked across the season
 - rainfall + irrigation – evapotranspiration/crop water usage



Crop Coefficients (Kc) From Late April



- 1st Ratoon = High water use, healthy crop
- Fallow = No water use, no crop
- 3rd Ratoon = Moderate water use, still healthy crop
- 5th Ratoon = Low water use, still healthy crop

© **Copyright 2025 by Sugar Research Australia Limited.** All rights reserved. No part of this publication, may be reproduced, stored in a retrieval system, or transmitted in any form or by any means, electronic, mechanical, photocopying, recording, or otherwise, without the prior permission of Sugar Research Australia Limited. Sugar Research Australia Limited acknowledges and thanks its funding providers, including levy payers (sugarcane growers and millers), the Commonwealth Government, and the Queensland Government (Department of Primary Industries). **Disclaimer:** In this disclaimer a reference to 'SRA', 'we', 'us' or 'our' means Sugar Research Australia Limited and our directors, officers, agents and employees. Although we do our very best to present information that is correct and accurate, we make no warranties, guarantees or representations about the suitability, reliability, currency or accuracy of the information we present in this publication, for any purposes. Subject to any terms implied by law and which cannot be excluded, we accept no responsibility for any loss, damage, cost or expense incurred by you as a result of the use of, or reliance on, any materials and information appearing in this publication. You, the user, accept sole responsibility and risk associated with the use and results of the information appearing in this publication, and you agree that we will not be liable for any loss or damage whatsoever (including through negligence) arising out of, or in connection with the use of this publication. We recommend that you contact our staff before acting on any information provided in this publication. **Warning:** Our tests, inspections and recommendations should not be relied on without further, independent inquiries. They may not be accurate, complete or applicable for your particular needs for many reasons, including (for example) SRA being unaware of other matters relevant to individual crops, the analysis of unrepresentative samples or the influence of environmental, managerial or other factors on production.

Thank you.