

# Food Waste Quiz



# QUESTION NO. 1

Globally, how much of all food produced goes to waste?



A. 30%

B. 10%

C. 5%



# THE ANSWER

A. 30%

That's equivalent to  
931 million tonnes  
every year



## Question 2:

In Australia, how many tonnes of food is wasted each year?

- A. 5 million tonnes
- B. 7.6 million tonnes
- C. 10.2 million tonnes

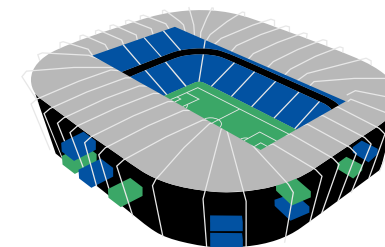
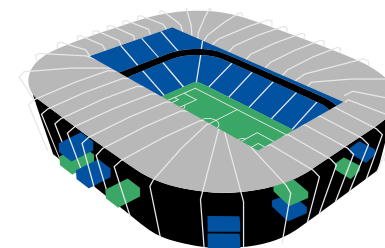
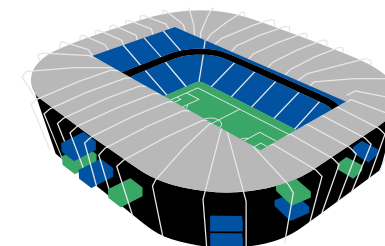
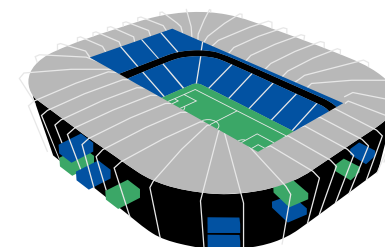
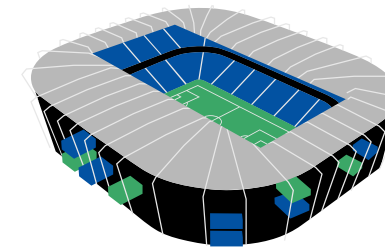
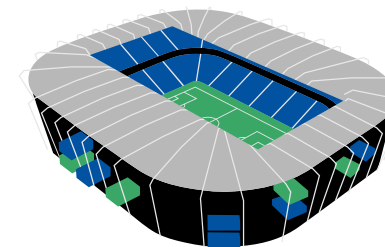
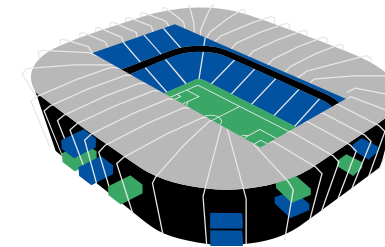
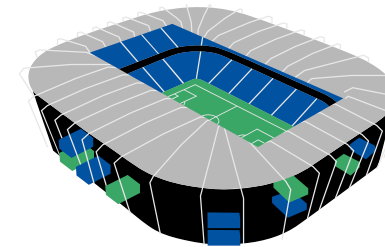
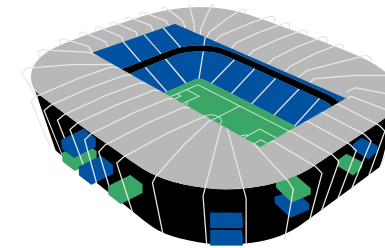
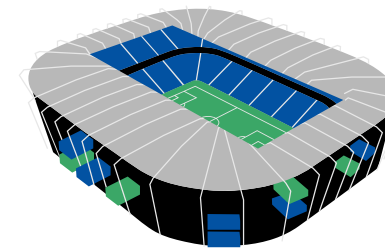




# THE ANSWER

**B. 7.6 million tonnes**

**That's equivalent to filling  
a sporting stadium to the  
brim 10 times.**



## QUESTION NO. 3

Food gets wasted across the supply chain.  
How much of the 7.6 million tonnes comes from our homes?

A. 6.1 million

B. 2.5 million

C. 1 million





# THE ANSWER

**B. 2.5 million tonnes**

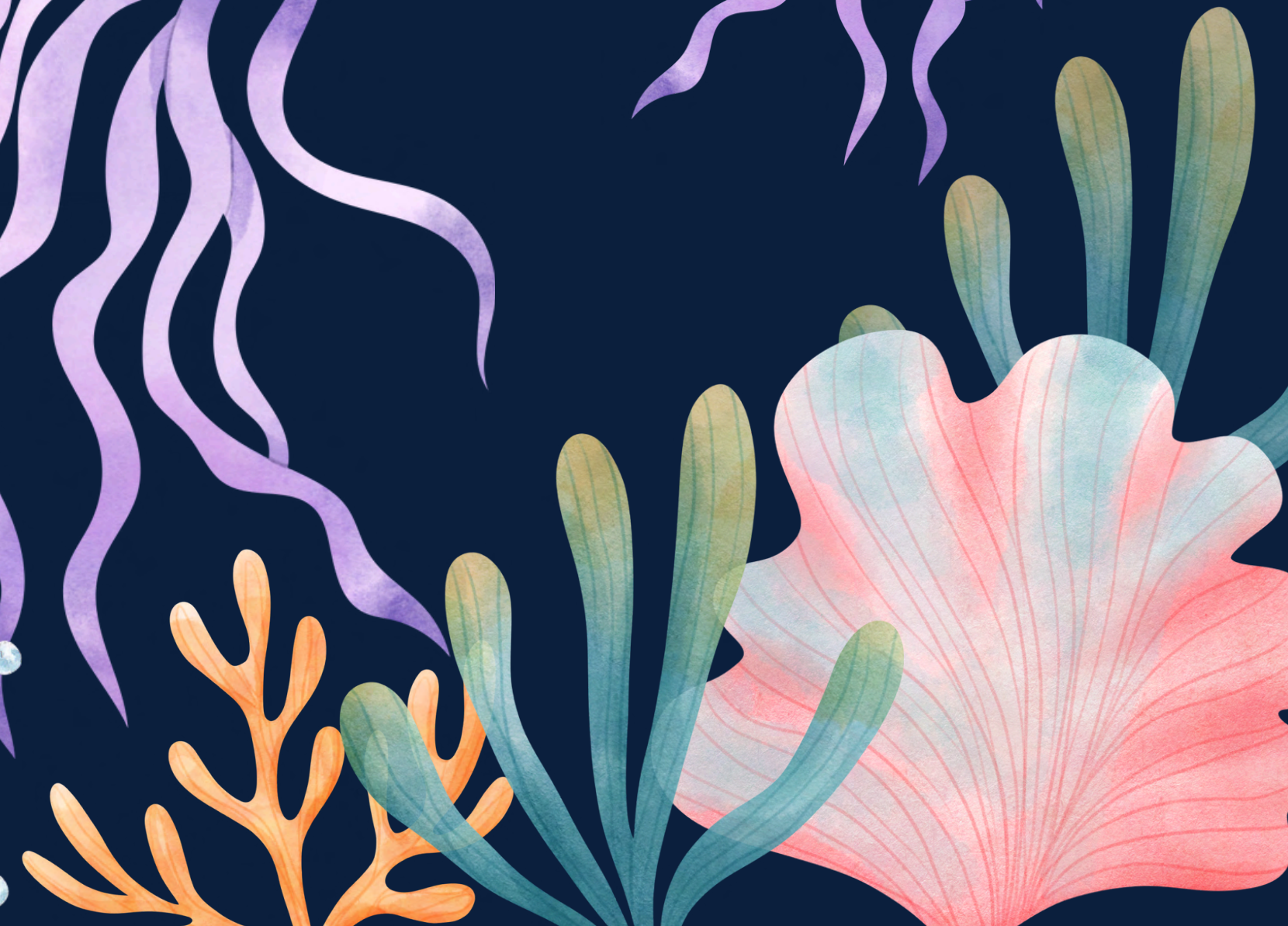
**The rest is lost through farms,  
transportation, manufacturing,  
supermarkets and restaurants**



## **QUESTION NO. 4**

**How much percentage of global greenhouse gas emissions are caused by food waste?**

- A. 25%**
- B. 10%**
- C. 3%**







# THE ANSWER

**B. 10%**

**Food waste feeds  
climate change**



## Question 5:

Which greenhouse gas is produced as food waste decomposes in landfill?

A. Carbon dioxide

B. Nitrous oxide

C. Methane





# THE ANSWER

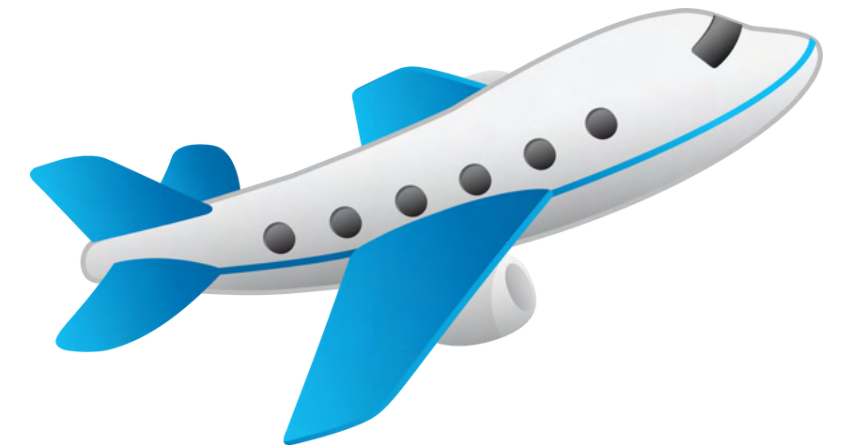
**C. Methane**

**Methane is 28x more potent  
than CO<sub>2</sub>**

## QUESTION NO. 6

True or False

Food waste in landfill contributes more to climate change than the emission caused by the aviation industry?

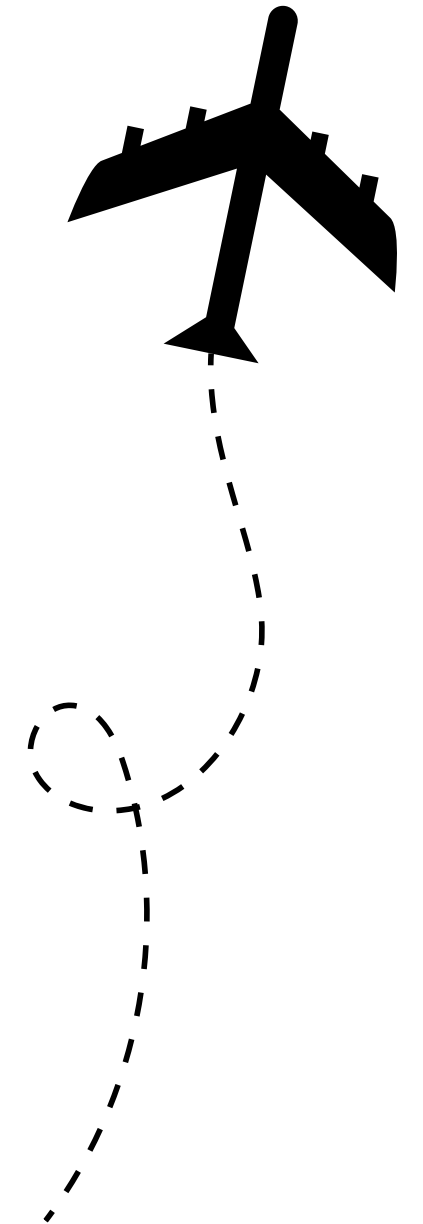




# THE ANSWER

True

Emissions from food waste are at least three times the emissions generated from the aviation industry on a global scale.



## Question 7:

Throwing away one beef burger wastes the equivalent of how many bath tubs of water?



A. 15

B. 8

C. 2

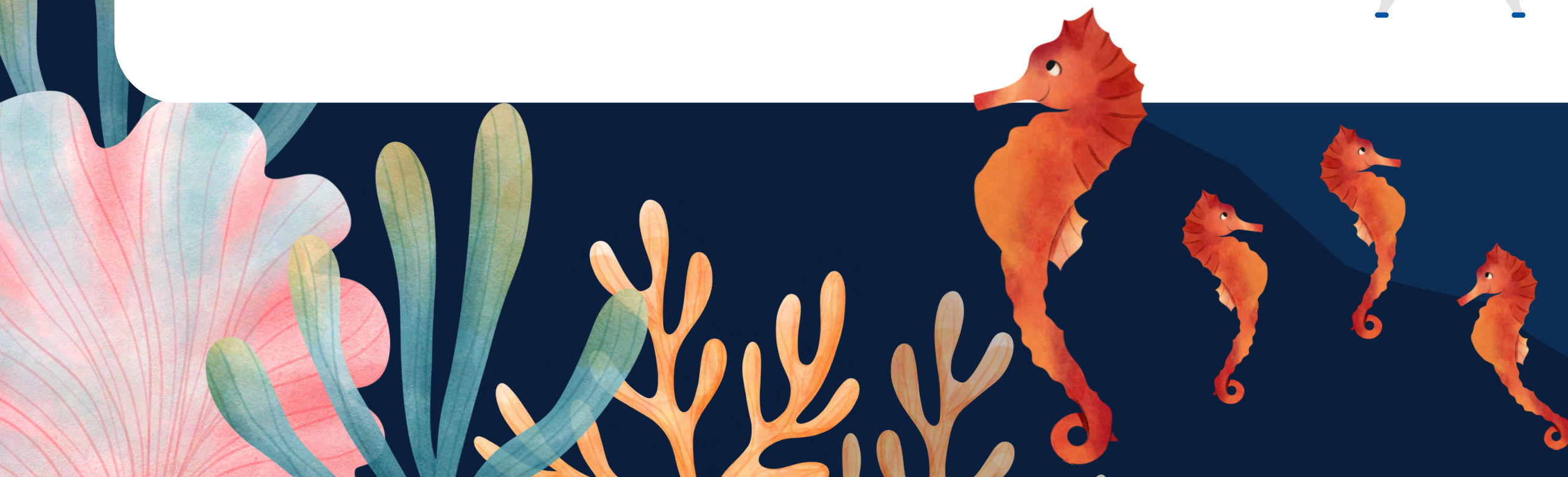




# THE ANSWER

A. 15

throwing away food also wastes  
the land, water, energy and  
money it cost to produce it



## **QUESTION NO. 8**

**What are ways to reduce food waste?**

- A. Using up leftovers**
- B. Buying/serving only what you need**
- C. Storing foods better to make them last  
(freezer/airtight containers)**
- D. All of the above**





# THE ANSWER

D. All of the above

This will help save food, save money and the planet

