

ARE YOU
SMARTER
THAN A BIN
CHICKEN?



LET'S PLAY!





WHICH BIN DO THESE ITEMS BELONG IN?

LANDFILL

RECYCLING

COMPOST

CONTAINERS FOR CHANGE



COMPOST





ANSWER THE QUESTION

COFFEE CUPS

LANDFILL

RECYCLING

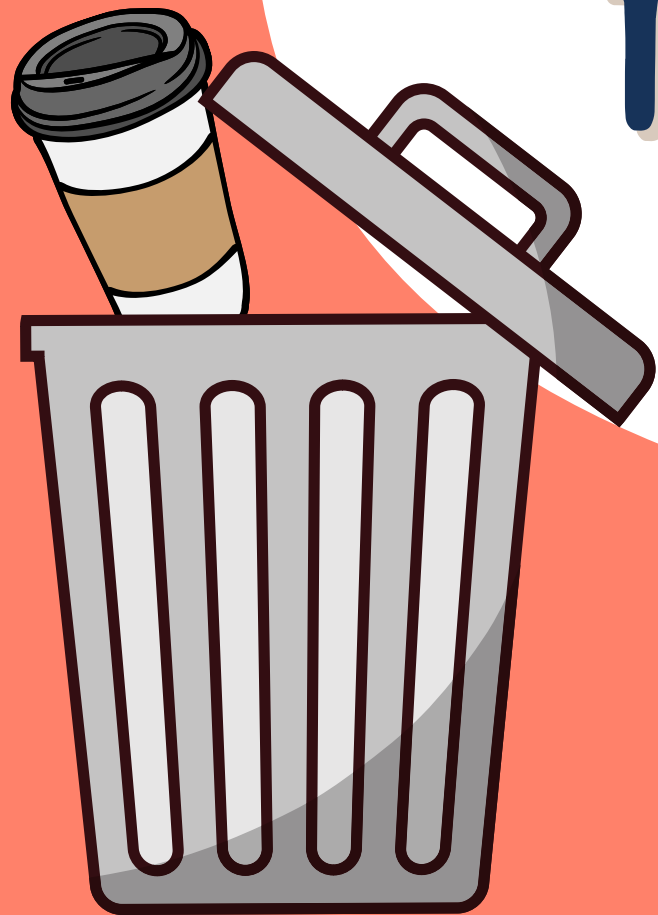
COMPOST

CONTAINERS FOR CHANGE



THE ANSWER IS

**LANDFILL -
PLASTIC LINING MEANS
THEY'RE NOT RECYCLABLE
YET**





ANSWER THE QUESTION



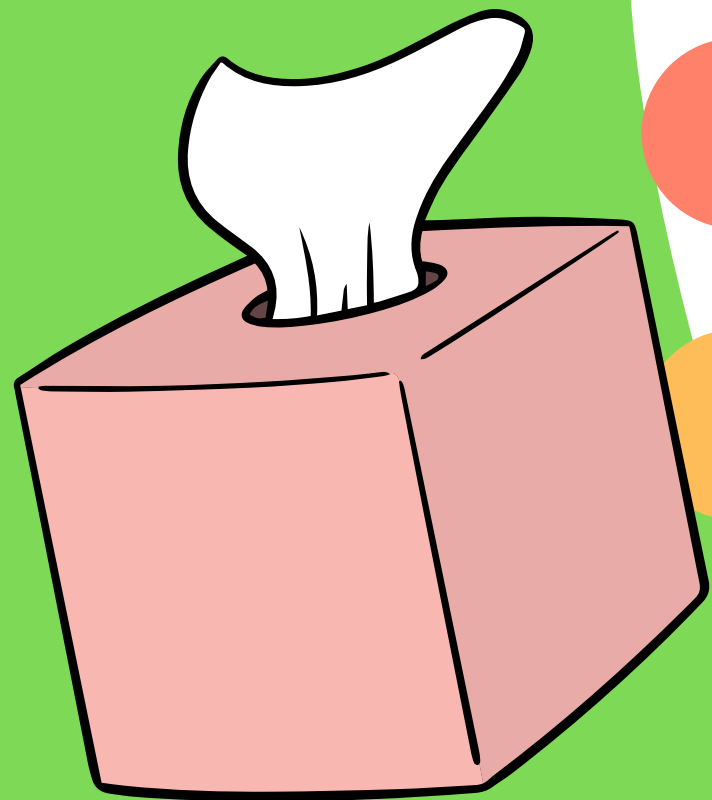
TISSUES AND PAPER TOWELS

LANDFILL

RECYCLING

COMPOST

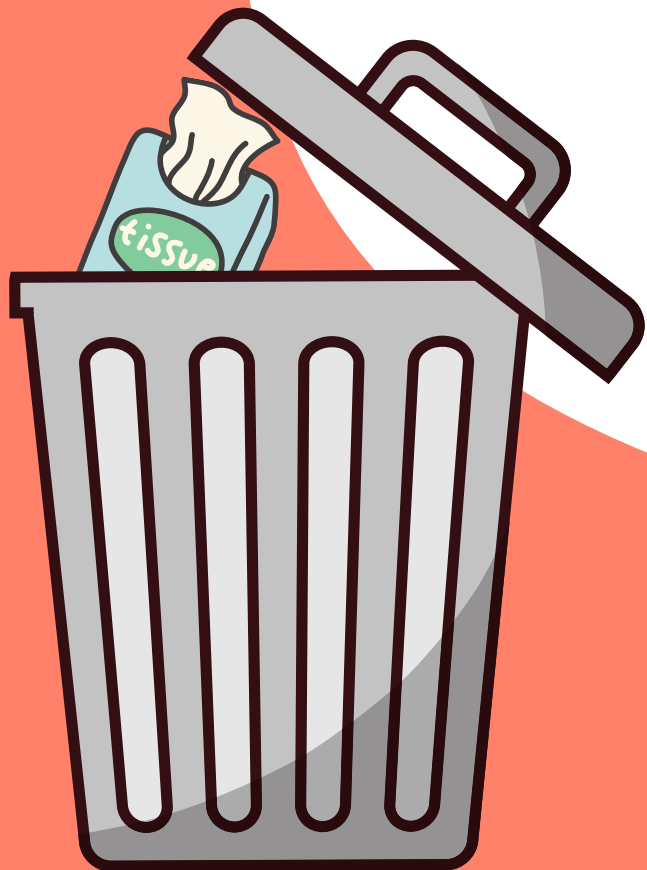
CONTAINERS FOR CHANGE



THE ANSWER IS

**LANDFILL -
FIBERS ARE TOO WEAK TO
BE MADE INTO ANOTHER
PRODUCT**

PAPER
STRAWS
TOO!



ANSWER THE QUESTION

PAPER OR CARBOARD

LANDFILL

RECYCLING

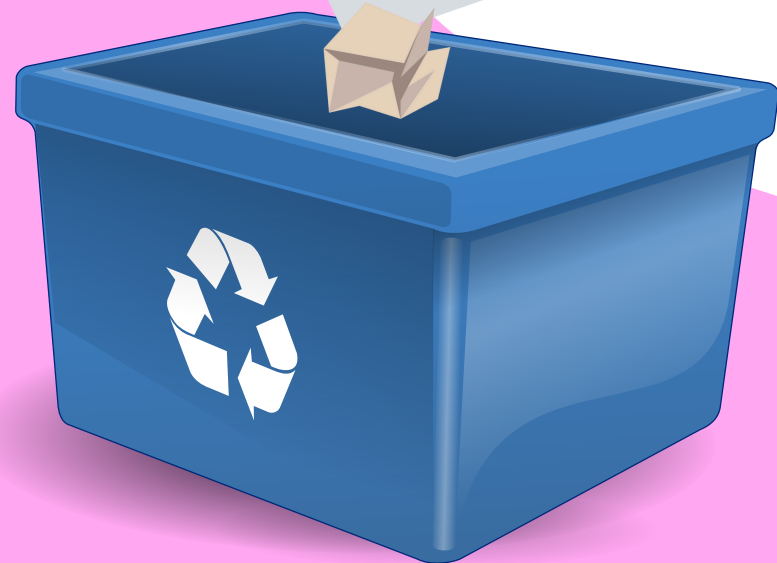
COMPOST

CONTAINERS FOR CHANGE



THE ANSWER IS

**RECYCLING -
TEAR INTO LARGE
SEGMENTS, EVEN DIRTY
PIZZA BOXES**



ANSWER THE QUESTION

SHREDDDED PAPER

LANDFILL

RECYCLING

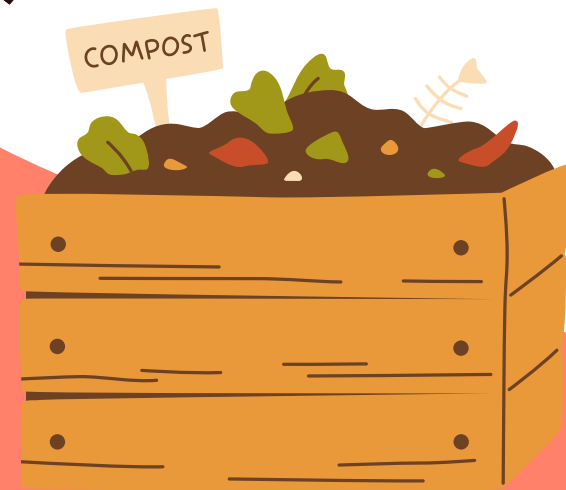
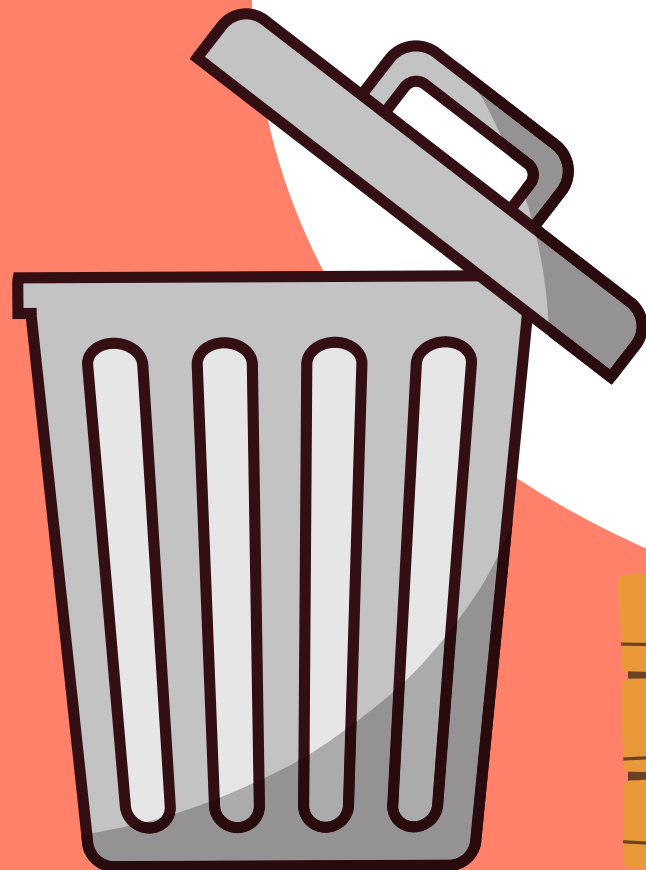
COMPOST

CONTAINERS FOR CHANGE



THE ANSWER IS

**LANDFILL/COMPOST/OTHER -
SMALLER SIZE CANNOT BE
RECYCLED, STUCK AROUND
MACHINERY**



ANSWER THE QUESTION

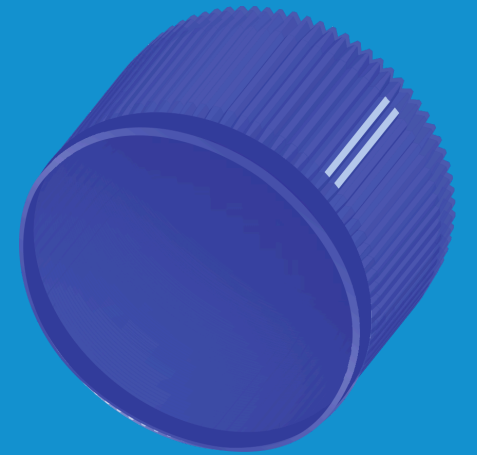
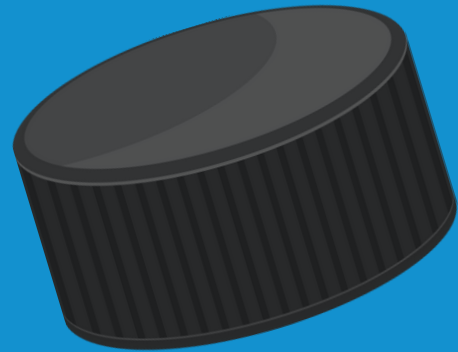
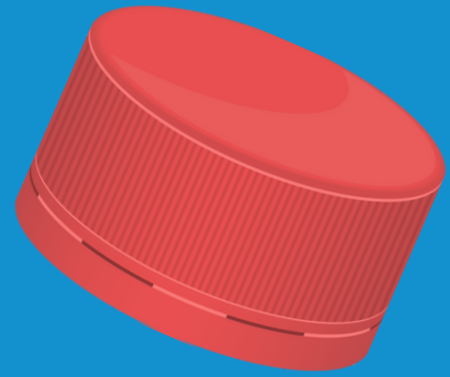
BOTTLE TOPS/LIDS

LANDFILL

RECYCLING

COMPOST

CONTAINERS FOR CHANGE



THE ANSWER IS

! LANDFILL/OTHER -
SMALLER THAN A CREDIT
CARD IS UNRECYCLABLE



ANSWER THE QUESTION

ICED COFFEE CUPS

LANDFILL

RECYCLING

COMPOST

CONTAINERS FOR CHANGE



THE ANSWER IS

**RECYCLING -
PLUS HOT COFFEE LIDS**



ANSWER THE QUESTION

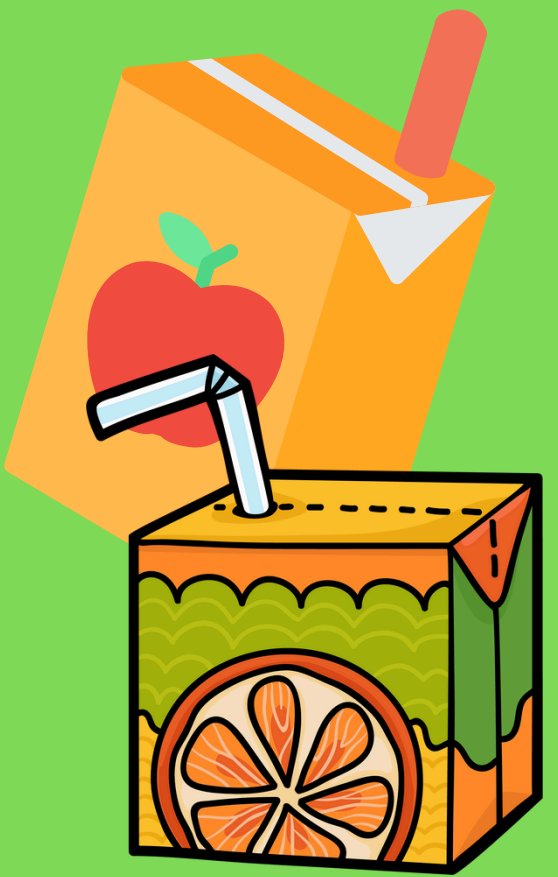
**PLASTIC BOTTLE/JUICE
CARTON/GLASS
BOTTLE/METAL CANS**

LANDFILL

RECYCLING

COMPOST

CONTAINERS FOR CHANGE



THE ANSWER IS

**CONTAINERS FOR CHANGE
/RECYCLE**



ANSWER THE QUESTION



HARD PLASTIC



LANDFILL

RECYCLING

COMPOST

CONTAINERS FOR CHANGE

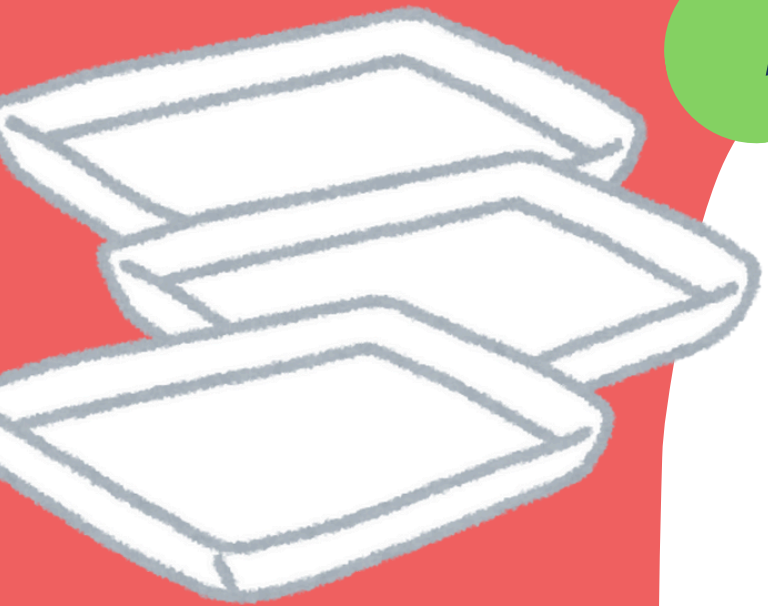


THE ANSWER IS

**RECYCLING -
MEAT TRAYS, TAKEAWAY
CONTAINERS, HOUSEHOLD
CLEANING PRODUCTS**



ANSWER THE QUESTION



POLYSTYRENE

LANDFILL

RECYCLING

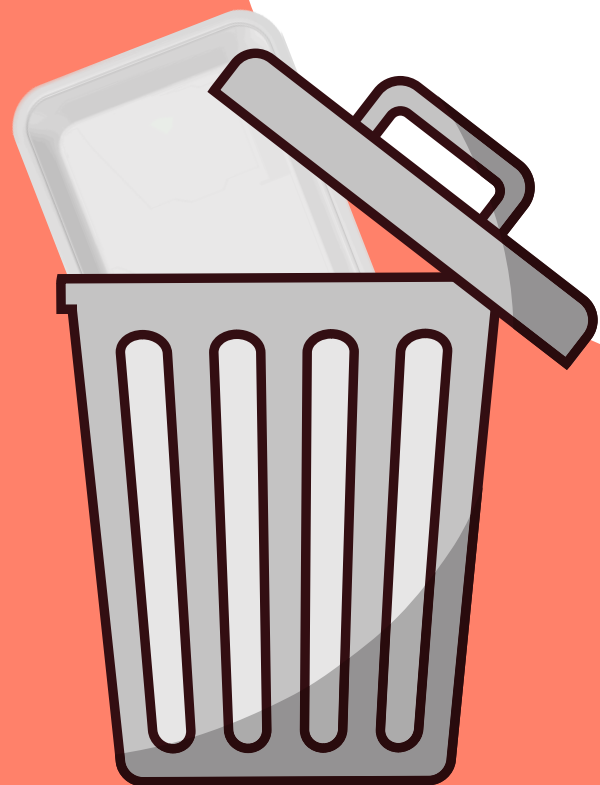
COMPOST

CONTAINERS FOR CHANGE



THE ANSWER IS

LANDFILL



ANSWER THE QUESTION

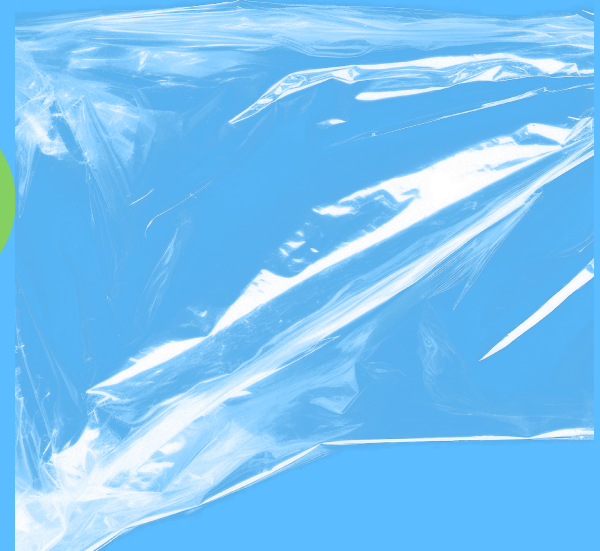
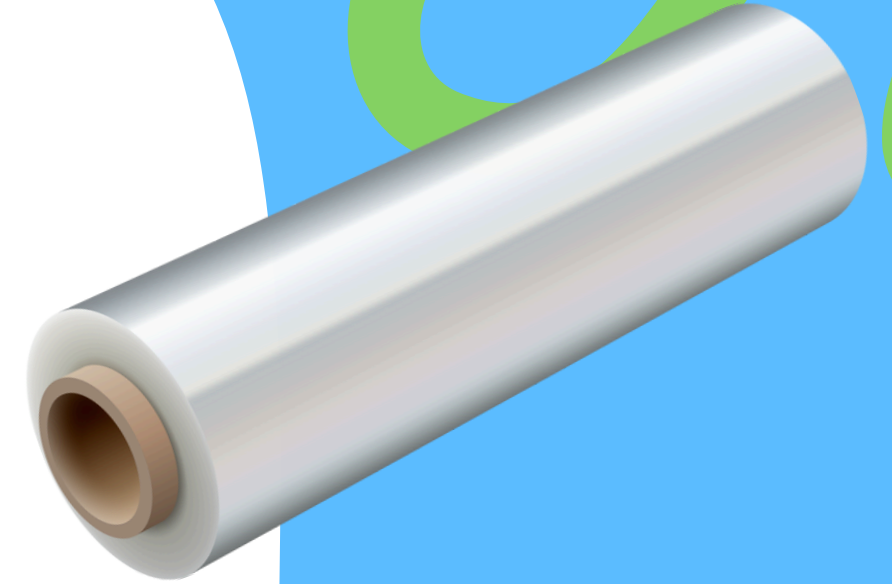
GLAD WRAP

LANDFILL

RECYCLING

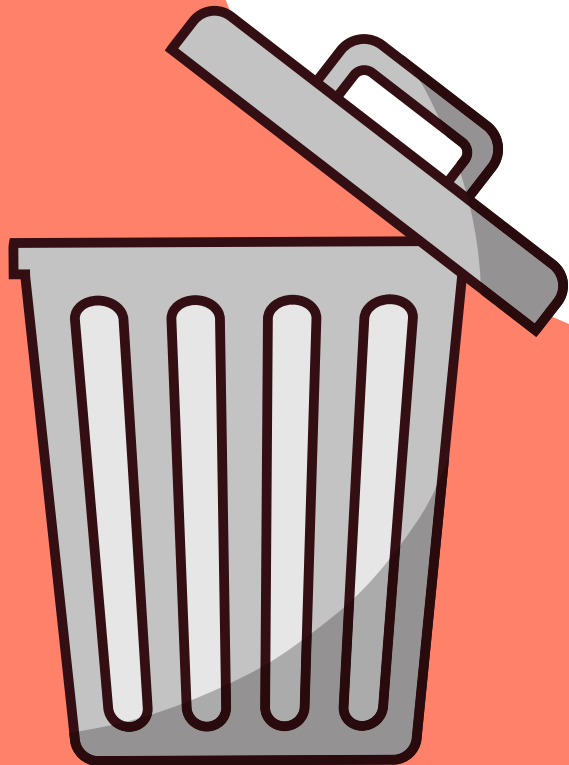
COMPOST

CONTAINERS FOR CHANGE



THE ANSWER IS

**LANDFILL -
SOFT PLASTIC
(SCRUNCHABLE) IS NOT
RECYCLABLE**



ANSWER THE QUESTION

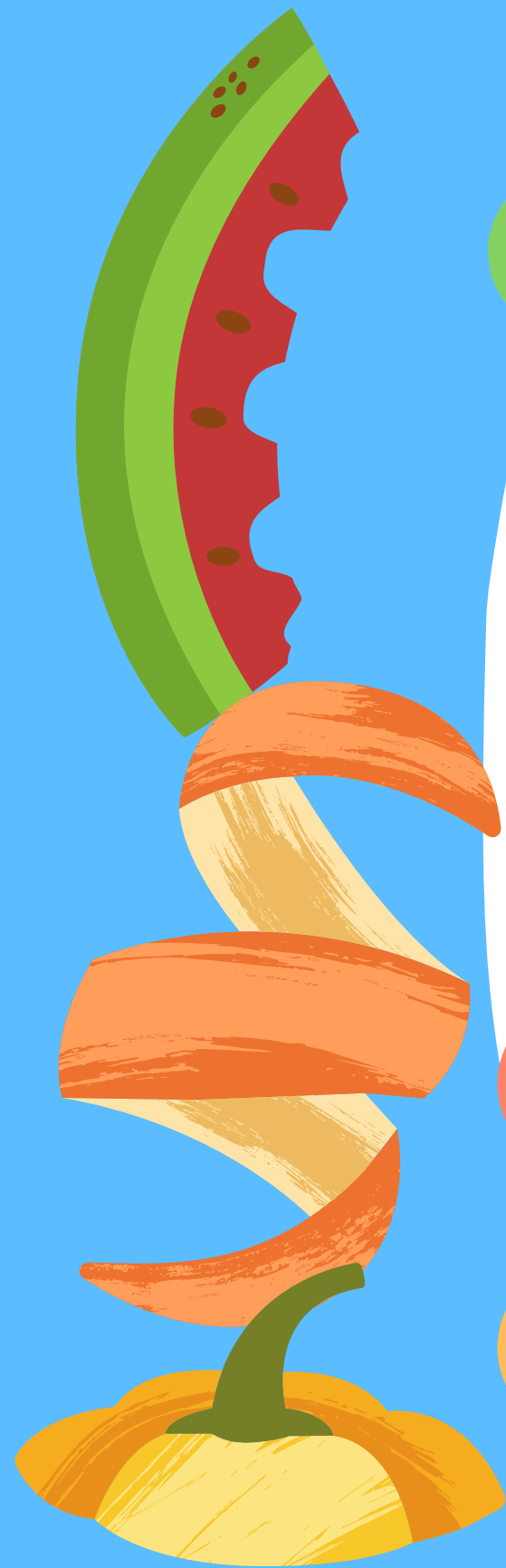
FRUIT/VEGGIE SCRAPS

LANDFILL

RECYCLING

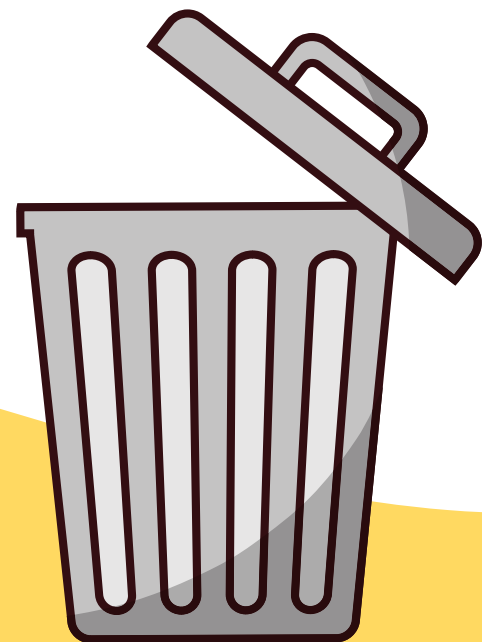
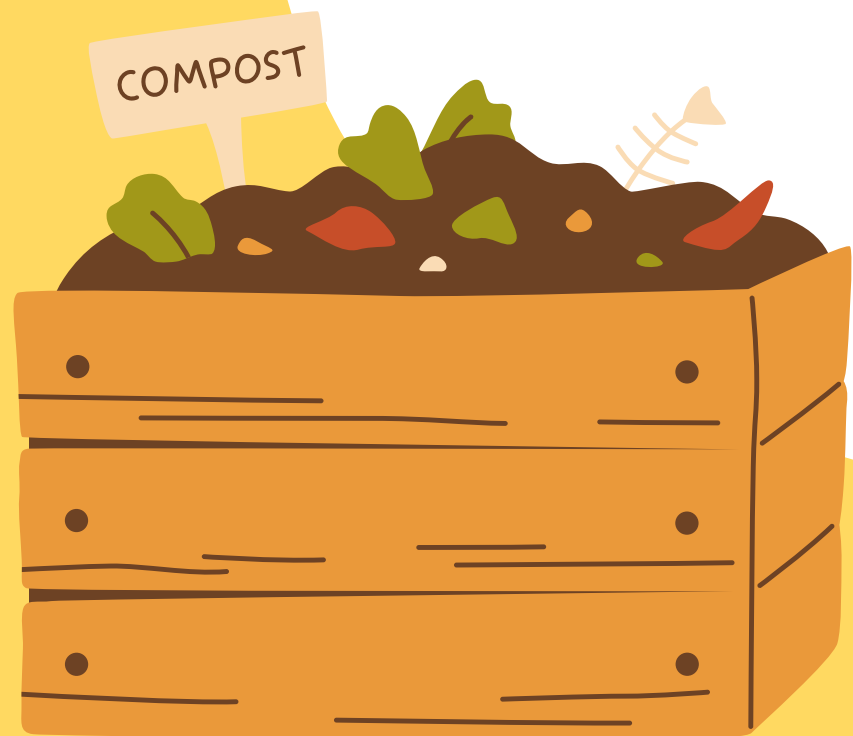
COMPOST

CONTAINERS FOR CHANGE



THE ANSWER IS

COMPOST OR LANDFILL



ANSWER THE QUESTION

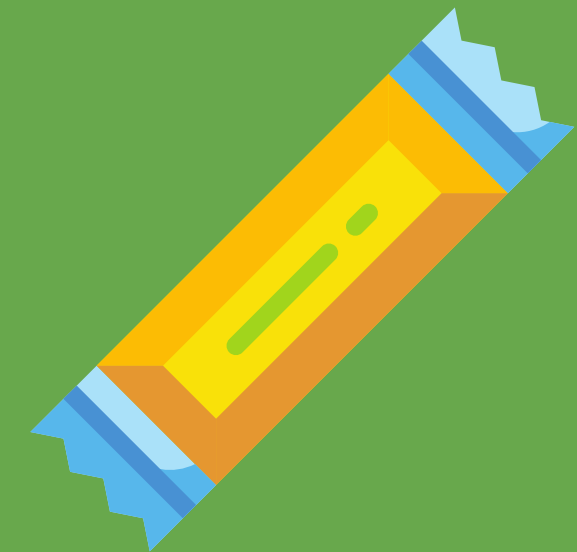
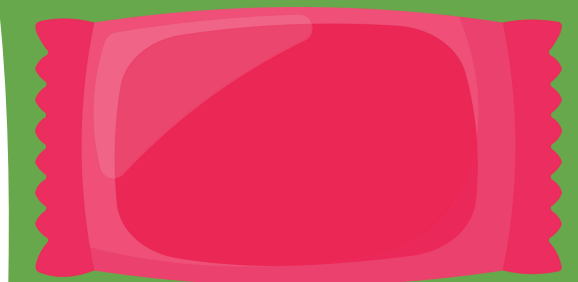
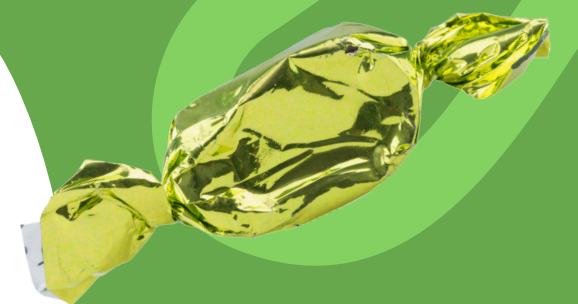
CHIP PACKET/ LOLLY WRAPPER

LANDFILL

RECYCLING

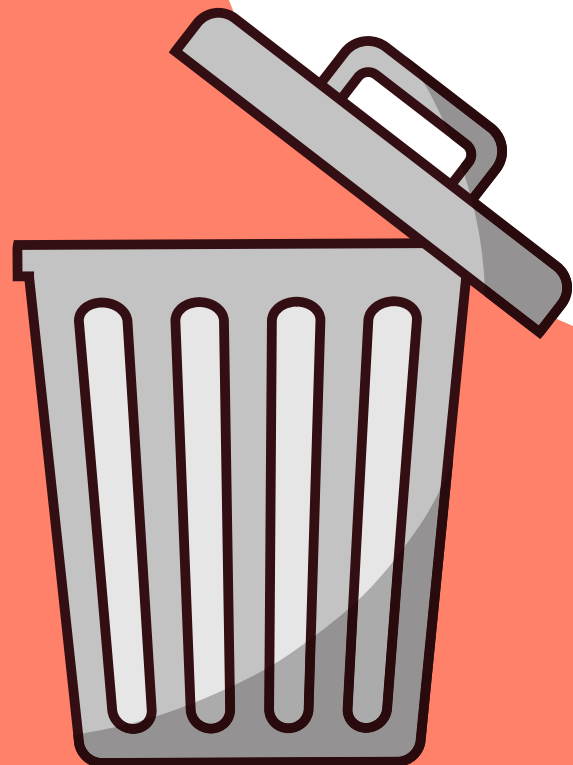
COMPOST

CONTAINERS FOR CHANGE



THE ANSWER IS

**LANDFILL -
SOFT PLASTIC
(SCRUNCHABLE) IS NOT
RECYCLABLE**



ANSWER THE QUESTION

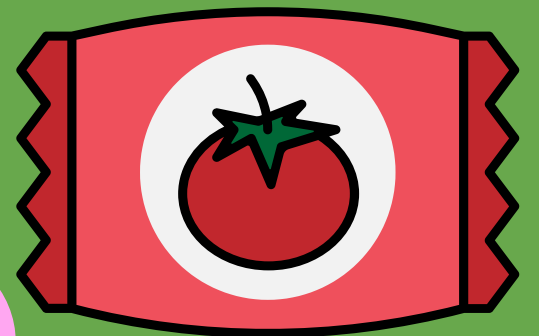
SOY SAUCE FISH/INDIVIDUAL SAUCE PACKETS

LANDFILL

RECYCLING

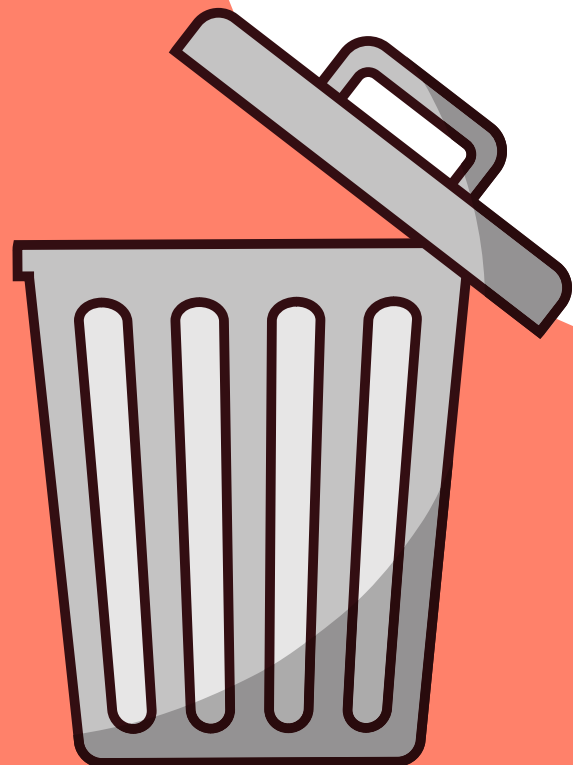
COMPOST

CONTAINERS FOR CHANGE



THE ANSWER IS

**LANDFILL -
SMALLER THAN A CREDIT
CARD**





ANSWER THE QUESTION

AEROSOL CAN/ GLASS JAR



LANDFILL

RECYCLING

COMPOST

CONTAINERS FOR CHANGE



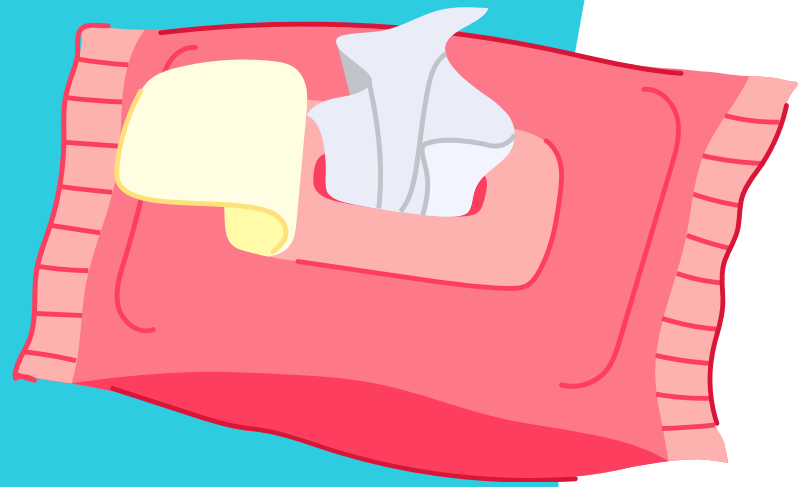
THE ANSWER IS

RECYCLING



ANSWER THE QUESTION

WET WIPES



LANDFILL

RECYCLING

COMPOST

CONTAINERS FOR CHANGE

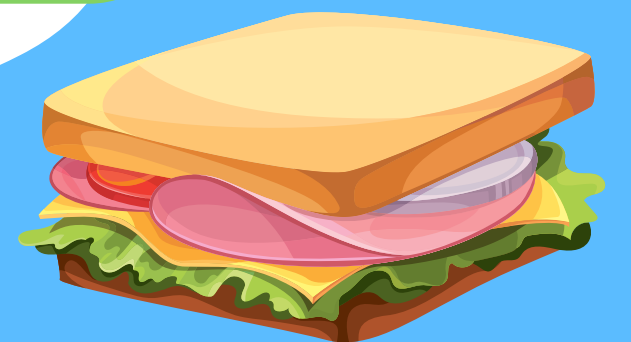
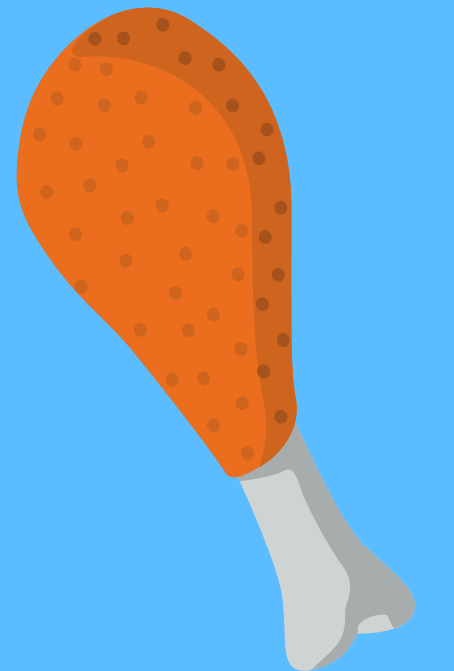
THE ANSWER IS

**LANDFILL -
NOT FLUSHABLE**



ANSWER THE QUESTION

BREAD, RICE, PASTA, MEAT SCRAPS



LANDFILL

RECYCLING

COMPOST

CONTAINERS FOR CHANGE

THE ANSWER IS

**LANDFILL OR
BELLY!**



ANSWER THE QUESTION

TEA BAGS/ COFFEE GRINDS

LANDFILL

RECYCLING

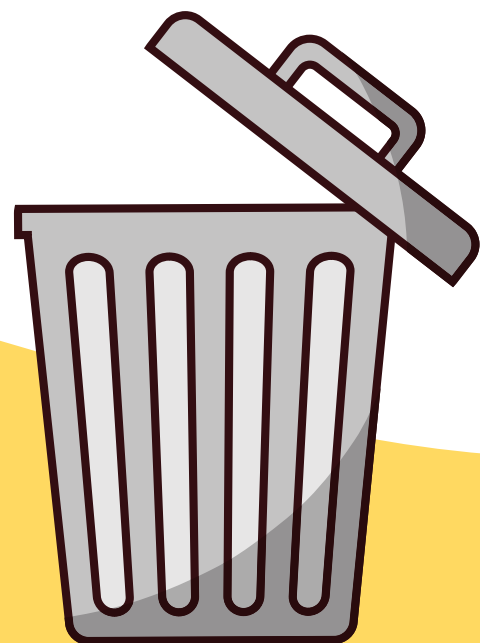
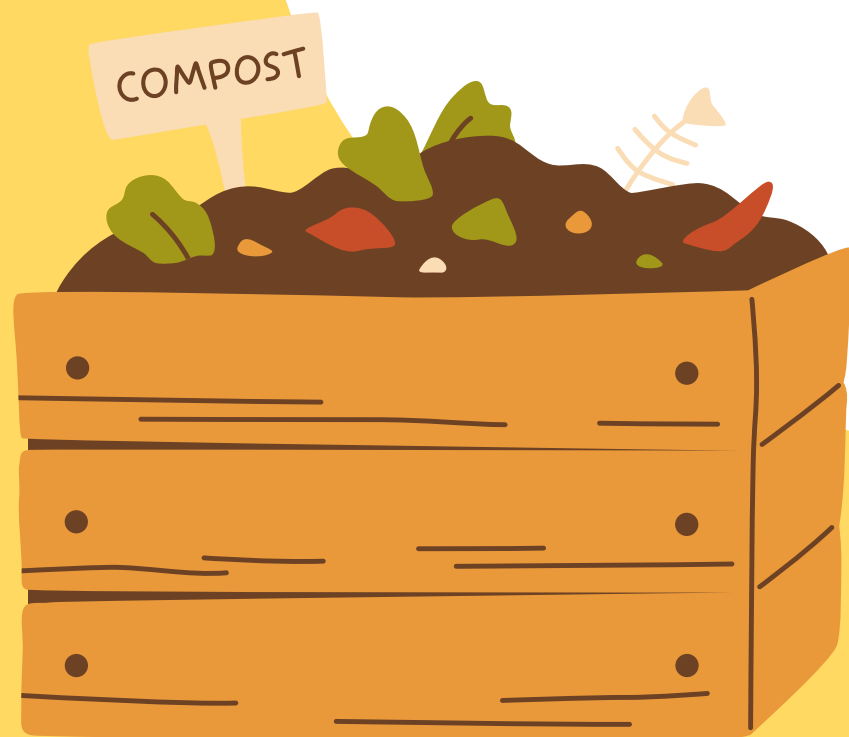
COMPOST

CONTAINERS FOR CHANGE



THE ANSWER IS

**COMPOST OR LANDFILL -
SOME TEA BAGS HAVE
PLASTIC IN THEM**



ANSWER THE QUESTION

WOODEN/BAMBOO CUTLERY

LANDFILL

RECYCLING

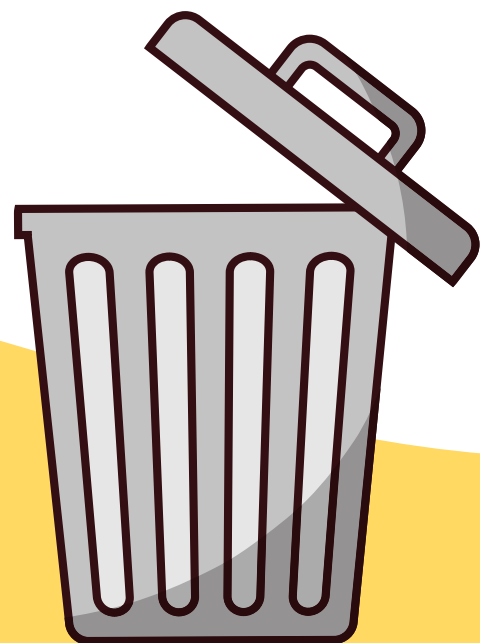
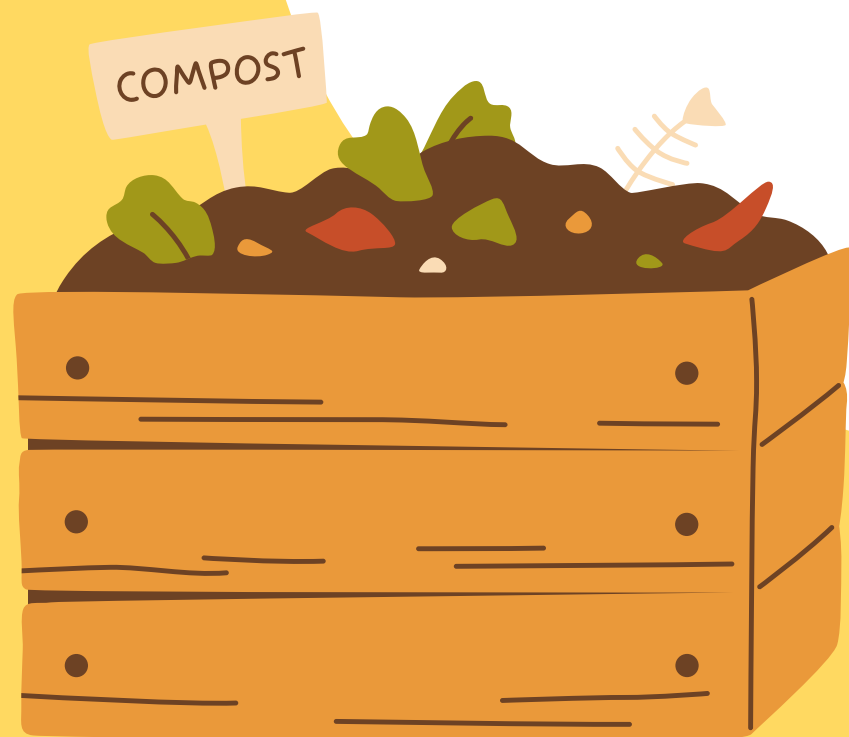
COMPOST

CONTAINERS FOR CHANGE



THE ANSWER IS

**COMPOST OR LANDFILL -
COMPOSTABLE, NOT
RECYCLABLE**



ANSWER THE QUESTION

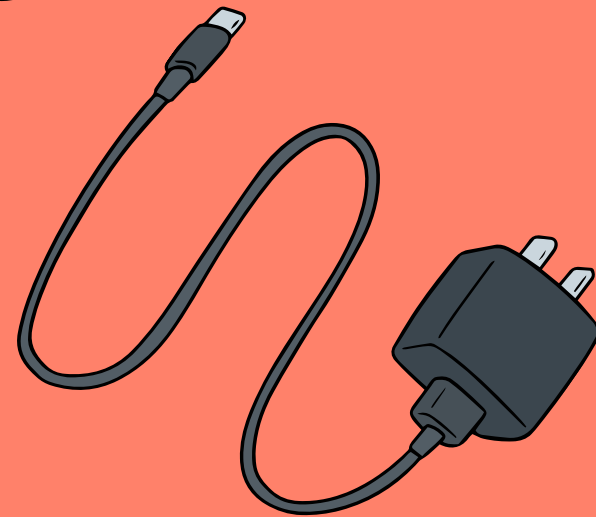
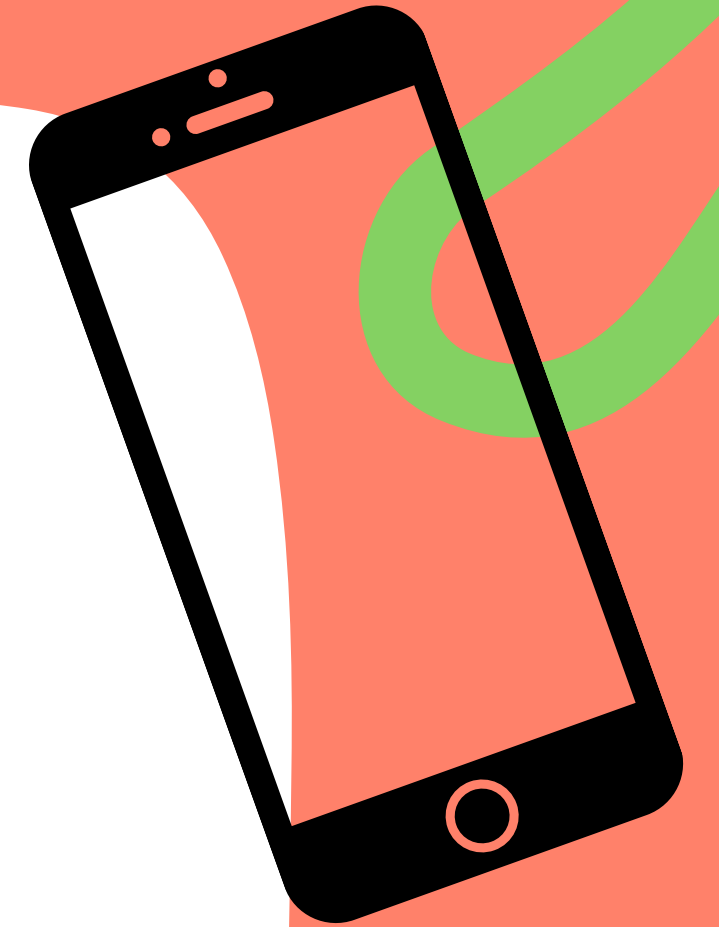
BATTERIES / PHONES

LANDFILL

RECYCLING



COMPOST

CONTAINERS FOR CHANGE



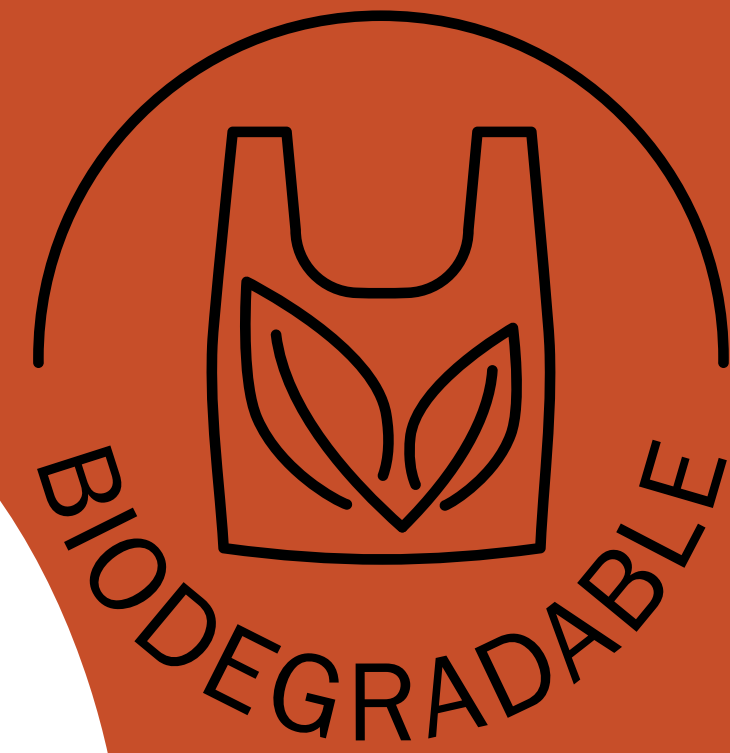


THE ANSWER IS



**COLLECTION POINT -
NOT LANDFILL
(OFFICEWORKS, ALDI,
BATTERY WORLD)**

**ALSO WATCH OUT FOR
COMPOSTABLE
VS
BIODEGRADABLE!**



THANKS FOR PLAYING



Great Barrier
Reef Foundation



The MWI School Waste Minimisation project is funded by the partnership between the Australian Government's Reef Trust and the Great Barrier Reef Foundation.