

Get to know us better...

Morgan Thomas

Reef Catchments Senior Project Officer

"I feel like I'm on the front line fighting for positive outcomes for our environment, which has beneficial flow-on effects for everyone."

Born and raised in Brisbane, Morgan has always had a passion for conservation and the environment. After completing a Bachelor of Science (Hons) with a major in Biology and minors in Environmental and Wildlife Sciences, Morgan took up an opportunity to work in Mackay at the mines, before transitioning towards a conservation role.

"I have always been a nature enthusiast, and while growing up I spent as much time outdoors as possible. My passion for the natural environment means the work I do at Reef Catchments gives me a great deal of satisfaction. Their values, the project work, the connection with the community and the culture were all things that aligned with my own personal values and made the decision to transition into natural resource management even easier."

I feel like I'm on the front line fighting for positive outcomes for our environment, which then has beneficial flow-on effects for everyone. The people I work with are amazing and make coming to work easy every day." - Morgan.

Environment & Community Impact

At Reef Catchments, Morgan delivers projects focused on reef conservation and restoration, enhancing marine and coastal ecosystem health, and engaging local communities in the protection and improvement of our natural areas.

From coordinating impactful reef initiatives to developing funding proposals, managing data, and promoting safe work environments, Morgan is dedicated to making a positive impact on our marine environments.

"My biggest achievement might be the behavioural changes that I've imparted onto the stakeholders involved in my projects, including improving land management practices, marine management and stewardship. This means better outcomes for the communities we work with AND the environment, supporting higher biodiversity function and building resilience in our natural environments" - Morgan.

Across his time working at Reef Catchments, Morgan has had the opportunity to help communities connect with their local environment.

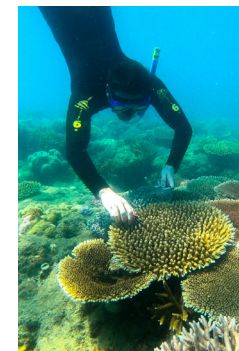
"In my previous projects, I was able to get the community involved and teach them more about our Threatened Ecological Communities, including the threats they face and ways they can help on-ground. I ran multiple educational walk-n-talks for a local home school group, and they have also been attending many other events through RCL. This is the work I love because it feels like I can influence the younger generation and meet new people from all different walks of life which also helps me to become better at my role" - Morgan.

The Whitsunday Reef Island Initiative

Last year, Morgan had the opportunity to step up as acting Coordinator of the Whitsunday Reef Island Initiative (WRII). During this period, Morgan helped complete fieldwork collecting coral spawn, as part of the Boats 4 Coral project. The fieldwork was incredibly successful, with roughly 100 million spawn collected and released to help support our inshore fringing reefs in the Whitsundays.

"The opportunity to act as WRII Coordinator, gave me exposure to a leadership role with more complex projects, in areas that I hadn't worked in previously. I LOVED being out on the water helping tourism operators, scientists and Traditional Owners to help our inshore fringing reefs. This project ignited a passion and motivation to do more marine fieldwork to help drive local priorities." - Morgan.

Morgan has since been promoted to Senior Project Officer and has moved over to the Reef team.



Pictured: Morgan in action, checking the development of coral spawn as part of the Whitsunday Reef Islands Initiative.



Pictured: Morgan at Sandringham wetlands transferring fish into the wetland pond, in preparation for excavation works.