



CASE

STUDY



Australian Government

“ WE WANT TO OPERATE CLODBREAK AS A SUCCESSFUL CATTLE BREEDING AND FATTENING ENTERPRISE, BY BEING ENVIRONMENTALLY SUSTAINABLE FOR THE LONG TERM.”

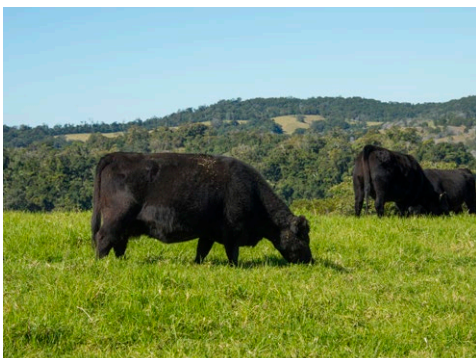
BACKGROUND

Kel and Mandy Tennent purchased Clodbreak in 2010. The 86 hectare property lies on the edge of Eungella National Park and Crediton State Forest, near Crediton. Crediton Creek runs the length of the property’s southern boundary. The land type is wet highland forest, with steep gullies and highly erodible soils with a tendency for landslip. The property was established as a dairy farm in the 1930s and prior to that was cleared for timber.

KEL AND MANDY TENNENT are graziers in Crediton (Mackay region). Through Australian Government Reef Programme 2013-16 Water Quality Grants, the Tennents’ were assisted to implement on-ground activities across the property to improve ground cover and water quality.

FOCUS ON

- ▶ PASTURE MONITORING AND RENOVATION
- ▶ RIPARIAN FENCING
- ▶ GULLY MANAGEMENT
- ▶ ROTATIONAL GRAZING



WHAT'S HAPPENING?

When Kel and Mandy purchased the property in 2010 it was dominated by lantana (estimated 80%) and a variety of other weed species. With the assistance of family and friends, the pair began the arduous task of clearing lantana and developing A-class pastures of Kikuyu, Rhodes grass and a variety of legumes.

“We want to operate Cloudbreak as a successful cattle breeding and fattening enterprise, and to do this by being environmentally sustainable and utilising best practice methods in line with our business plan,” Kel said.

In 2011-2012, Kel and Mandy applied for funding through Reef Catchments' Reef Rescue water quality grants (now Reef Programme). This allowed them to attend a DAF-run Stocktake Course, which gave them the foundation knowledge needed to start improving property management. They were also funded to install 2.8 km of riparian fencing to control stock access to a number of steep sloping gullies prone to erosion.

“Thanks to the Reef Catchments and the Reef Programme, in the first financial year of our involvement, we were able to complete 2.8 km of riparian fencing, install three off-stream watering points, complete a Stocktake pasture course, implement pasture monitoring and improve pasture management,” Kel said.

In the following 2012-2013 funding round, Kel and Mandy received further funding for an additional 3 km of riparian fencing along Crediton Creek to control stock access and reduce erosion along the banks. They also installed a further four off-stream water points and undertook 48 ha of pasture improvement and rehabilitation. Activities included weed control and A-class pasture preparation, including sowing a variety of pasture species.

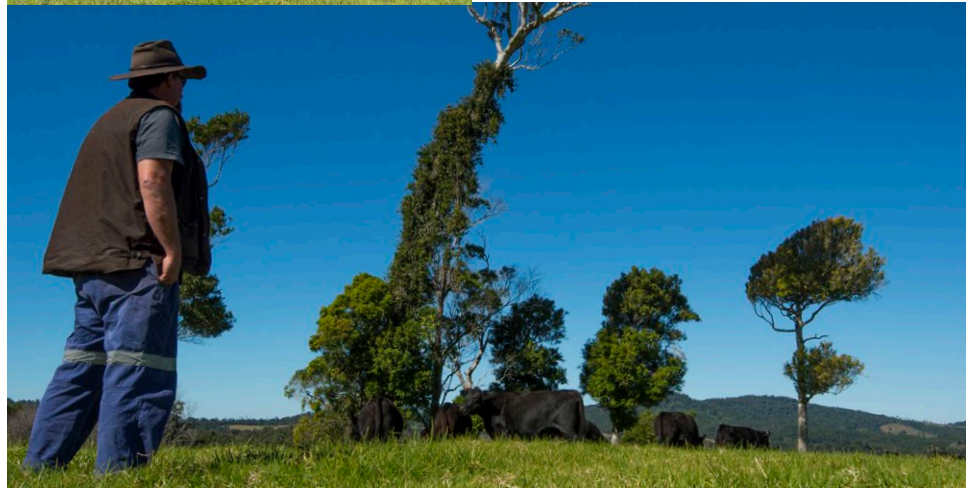
THROUGH REEF CATCHMENTS AND

SUPPORT FOR THIS PROJECT IS PROVIDED BY REEF CATCHMENTS, THROUGH FUNDING FROM THE AUSTRALIAN GOVERNMENT.

THE AUSTRALIAN GOVERNMENT REEF PROGRAMME, THE TENNENTS HAVE BEEN SUPPORTED TO COMPLETE 5.8KM OF RIPARIAN FENCING, INSTALL 7 OFF-STREAM WATERING POINTS, COMPLETE A STOCKTAKE PASTURE COURSE, IMPLEMENT PASTURE MONITORING AND IMPROVE PASTURE MANAGEMENT.

By internal fencing of gullies and the installation of strategic water points, the Tennents have developed an effective rotational grazing program for long term improvement. This has allowed them to control stock grazing in different areas of the property, improve ground cover and enabled them to regularly spell paddocks for up to a number of weeks.

In the 2015-2016 Reef Programme funding round the Tennents secured further funding to renovate 14 ha of rundown pasture. Agricultural lime was applied to the soil to neutralise acidity and reduce aluminum toxicity. This application improved pasture growth substantially, in particular the legume content (white clover) during the winter months. While Kel and Mandy noticed improved ground cover they also observed significant increases in weight gains for their cattle, which is normally difficult to maintain during the colder months.



KEY POINTS



- ▶ 86 hectare property

WORKS COMPLETED INCLUDE:

- ▶ Installation of 5.8 km of **riparian fencing** to **control stock access** to steep sloping gullies prone to erosion
- ▶ Installation of 7 **off-stream watering points**
 - ▶ 48 ha of pasture improvement and rehabilitation, including undesirable species control (e.g. lantana) and A-class pasture preparation
 - ▶ 14 ha of rundown **pasture renovation**, including soil ameliorant application to **improve groundcover** and reduce sediment and nutrient runoff
- ▶ Completion of **Stocktake Course**

The reduced sediment and nutrient runoff will result in less erosion and improved water quality. Pasture monitoring (including photo points) and a series of soil tests will be completed to access the ongoing effectiveness of the Agricultural lime application.

The opportunity to view the pasture and soil health is valuable in demonstrating a local working example of practice improvements. This property is a showcase example of sustainable management practices, of interest to consumers and producers alike. In 2017 and 2018 the Tennent's hosted visitors to a number of events including a network of innovative graziers and a Farm to Plate bus tour.