

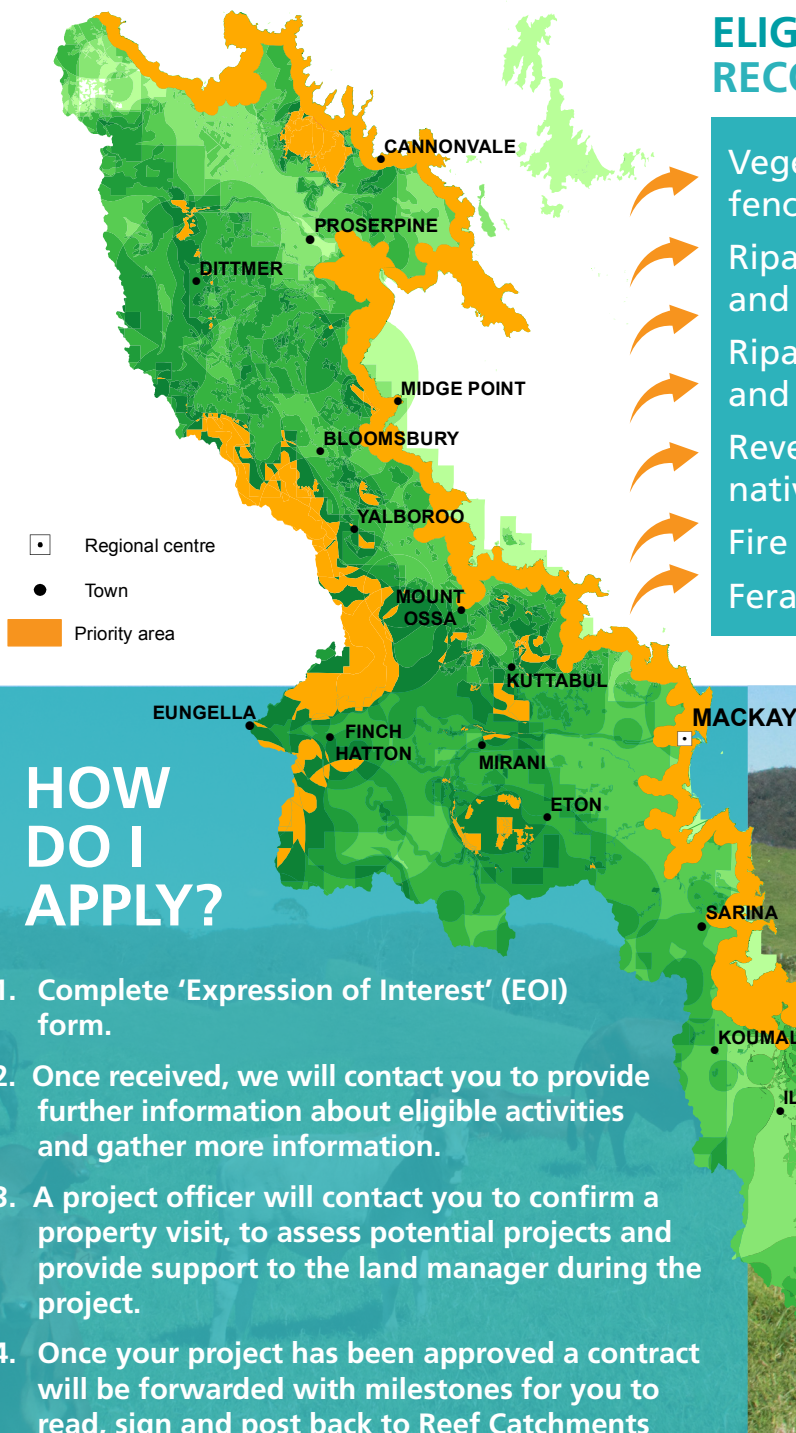
AUSTRALIAN GOVERNMENT RECOVERY PROGRAM



Reef Catchments has been awarded funding through the Australian Government to undertake recovery works in priority areas of the Mackay Whitsunday region. Activities will focus on sustainable land management practices that also reduce threats to the health of the land, such as weed control, land-type fencing, revegetation, fire management and feral animal control.

ELIGIBLE ACTIVITIES IN PRIORITY RECOVERY AREAS

Vegetation management (land type fencing and watering points)
Riparian fencing (creeks and rivers) and watering points
Riparian management (revegetation and weed control)
Revegetation and weed control of native vegetation
Fire management
Feral animal management



HOW DO I APPLY?

1. Complete 'Expression of Interest' (EOI) form.
2. Once received, we will contact you to provide further information about eligible activities and gather more information.
3. A project officer will contact you to confirm a property visit, to assess potential projects and provide support to the land manager during the project.
4. Once your project has been approved a contract will be forwarded with milestones for you to read, sign and post back to Reef Catchments (funding milestones are for completion in the same financial year the project is approved).



For more information contact Reef Catchments

Jacob Betros, Regional Landcare Facilitator

PHONE 0408 904 036

EMAIL jacob.betros@reefcatchments.com



REEF CATCHMENTS LAND MANAGEMENT PROGRAMS



EXPRESSION OF INTEREST

If you are interested in receiving Recovery Program incentives for activities please:

1. **TICK** the activities you are interested in
2. **COMPLETE** the application form below with your contact and property details
3. **EMAIL** this form:
info@reefcatchments.com or mail to:
PO Box 1096, Proserpine QLD, 4800

RECOVERY PROGRAM - ACTIVITIES (Priority areas only)

- ☐ Vegetation management (land type fencing and watering points)
- ☐ Riparian fencing (creeks and rivers) and watering points
- ☐ Riparian management (revegetation and weed control)
- ☐ Revegetation and weed control of native vegetation
- ☐ Fire management
- ☐ Feral animal management

APPLICATION FORM PLEASE COMPLETE DETAILS BELOW

Date of Application.....

First Name..... Surname

Tel..... Mobile

Fax Email

Previous Reef Rescue Project? (Yes/No)

Are you a registered primary producer for tax purposes? (Yes/No)

Postal Address

Property Address

Lot and Plan No (from rates notice)

Farm Number(s).....

Total Farm Area (Ha/acres)

For more information contact Reef Catchments

Jacob Betros, Regional Landcare Facilitator

PHONE 0408 904 036

EMAIL jacob.betros@reefcatchments.com



Australian Government