



## BIOSECURITY?

## EVERYONE'S BUSINESS

Sarah-Jane Wilson BVSc, MVPHMgt, PhD  
National Operations Manager  
Northern Australia Manager



Reef Catchments grazing forum, Mackay

# The organisation - LBN

Industry initiative



# BIOSECURITY = RISK MANAGEMENT

Managing the risk of pests, diseases and weeds

1. entering...
2. establishing...
3. spreading...

...within your Country, State, catchment, farm



 Australian Government  
Department of Agriculture

 Queensland Government



 Mackay REGIONAL COUNCIL

 Whitsunday Regional Council

 MISAAC REGIONAL COUNCIL



# Biosecurity Risks

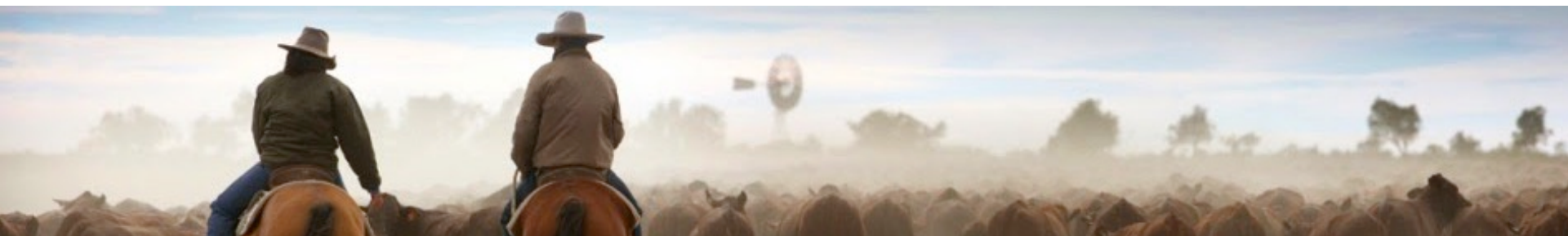
Anything that impacts market confidence –

- Animal diseases
- Pests and weeds
- Animal welfare
- Natural disasters
- Food safety issues
- Social conscience
- Traceability



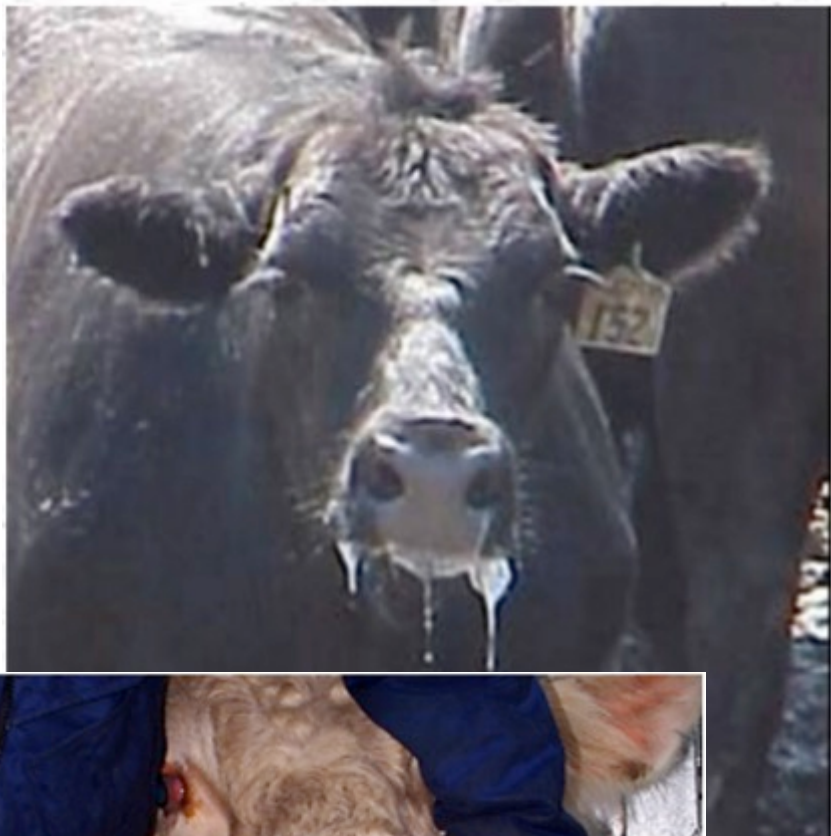
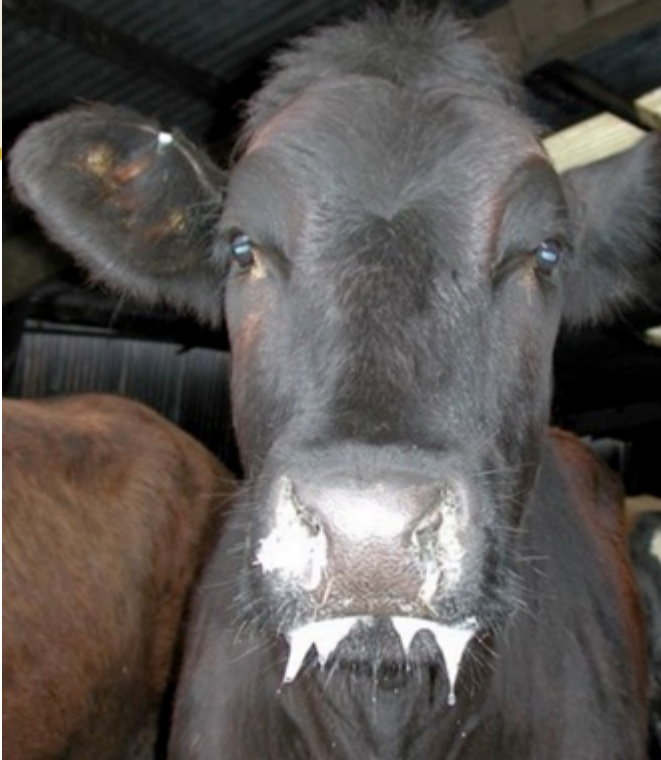
# 8 Priority Biosecurity Areas

1. Livestock movements, sales and purchases
2. People, vehicles and equipment
3. Livestock feed and water
4. Feral animal, pest and weed control
5. Animal health and welfare management
6. Carcass, effluent and waste management
7. Staff roles and responsibilities (including record keeping)
8. Contingency planning, monitoring for improvement











# Differential diagnosis of FMD in cattle:

- Mucosal disease (pestivirus)
- Bovine papular stomatitis,
- Bovine ulcerative mammillitis, pseudocowpox,
- Malignant catarrhal fever,
- Infectious bovine rhinotracheitis/ infectious pustular vulvovaginitis,
- Other causes of ulceration (e.g. contact dermatitis, caustic substances or photosensitisation) and other causes of lameness (e.g. laminitis, hoof abscess or footrot).

\* not present in Australia

Vesicular stomatitis\*

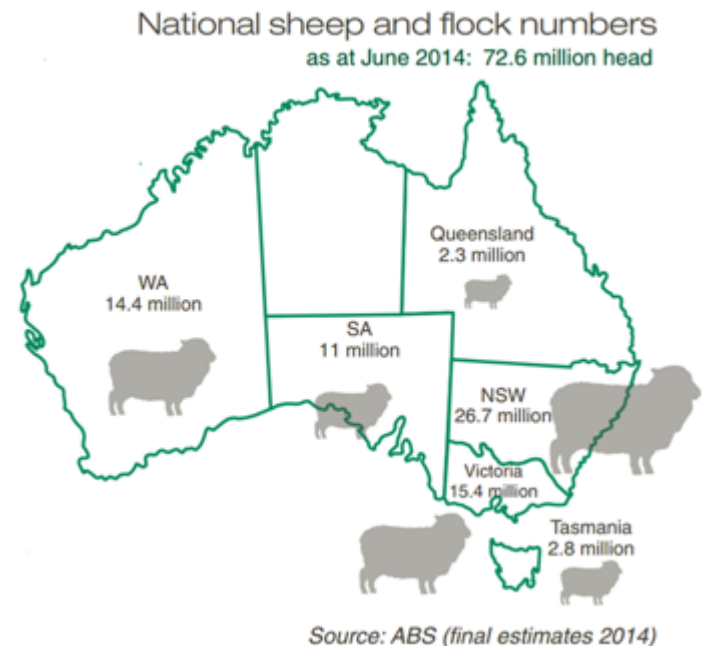
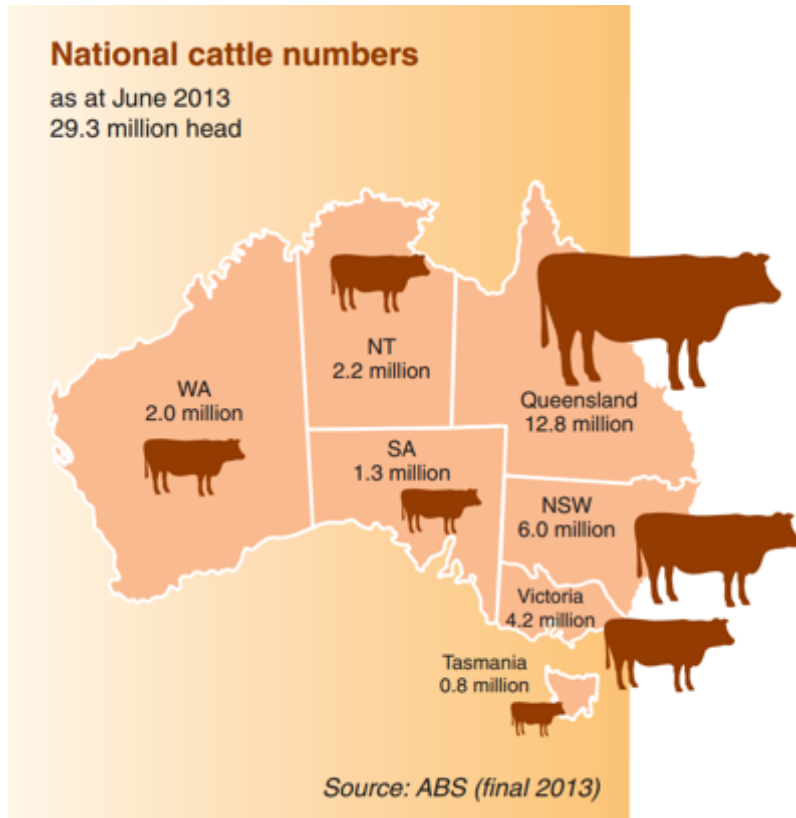
Clinical bluetongue disease\*



# Diagnosis??



# Our red meat and wool industry





# Why is Biosecurity Important?

**Table S1 Present value of total direct economic losses for livestock producers over 10 years**

Scenario/strategy	Control costs (\$b)	Revenue losses (\$b)	Total direct cost (\$b)
<b>Large multi-state outbreak</b>			
Stamping out	0.37	51.84	52.21
Stamping out with extensive vaccination	0.35	49.54	49.89
Stamping out with targeted vaccination	0.32	49.29	49.62
<b>Small outbreak in Victoria</b>			
Stamping out	0.10	5.90	6.00
Stamping out with extensive vaccination	0.09	6.17	6.26
<b>Small outbreak in North Queensland</b>			
Stamping out	0.06	5.58	5.64
Stamping out with extensive vaccination	0.06	5.90	5.96

Note: Present value costs calculated at a discount rate of 7 per cent.

Source: ABARES

# The new Biosecurity Act – Qld 2014

**Biosecurity regulations:**  
Protecting Queensland's future

# What can I do as a producer??





# EAD HOTLINE – 1800 675 888



**Save these  
numbers in  
your phone!**



Questions??

Thank you!