



Reef Water Quality Protection Plan 2013

Reef Plan and Paddock to Reef Program Future directions



Australian Government



Queensland Government



Reef Plan 2013

- Reef Plan 2013 released in July – 5 year plan
- Informed by:
 - Scientific Consensus Statement
 - Report Cards
 - Modelling scenarios
- Maintains focus on agriculture, while doing some foundational work on urban etc over the next five years
- New actions and refined goals & targets





Reef Plan 2013 focus and work areas



1. Prioritising investment and knowledge



2. Responding to challenge



3. Evaluating performance

- Moves away from a regulatory approach
- Focus on Best Management Practice (BMP) programs, incentives and extension
- Continued focus on measuring success of the program





Reef Plan 2013 Goals and targets

- Revised to be met by 2018
- Retained the long term goal – water quality has no detrimental impact on health and resilience of the reef
- Nitrogen (50%) load reduction target - focus on dissolved
- Sediment (20%) load reduction target retained
- Increased the pesticide load reduction target to 60%
- Increased the groundcover target to 70% cover.
- Revised the management practice targets to 90% adoption of best management practice systems.





Emerging issues

- Best practice alone may not achieve our targets.
- Need to look for “gamechanger” practices, particularly for nutrient management.
- Targeted approach focused on highest risk pollutants and areas.
- Need to protect and enhance wetlands and riparian areas.





More targeted approach

- Relative risk assessment

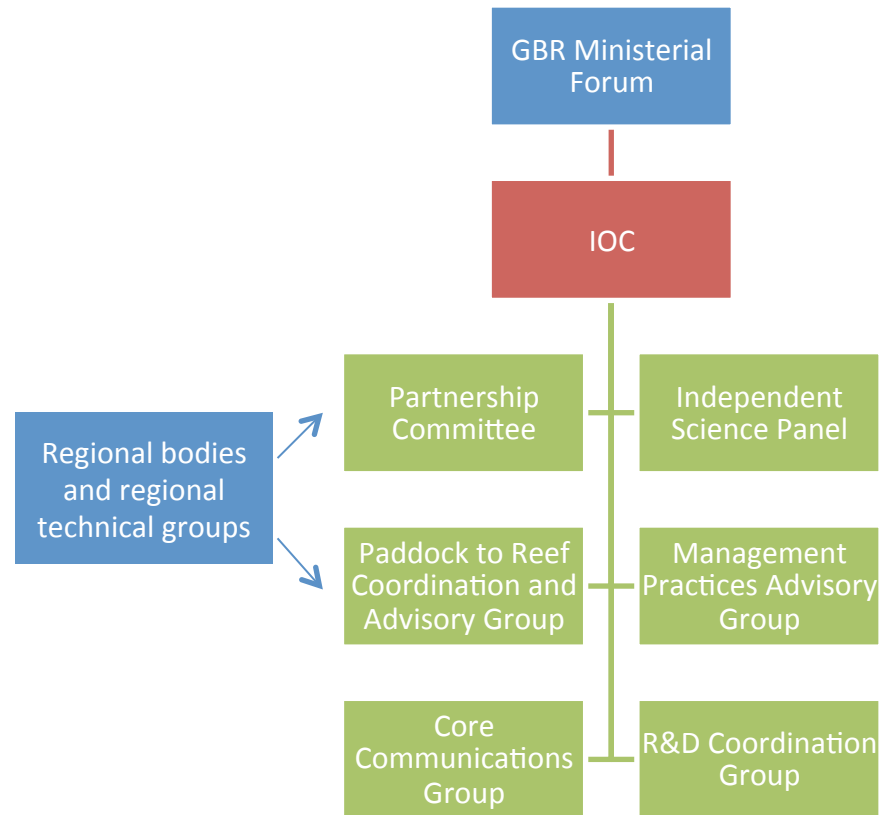
Region	Overall relative risk	Priority pollutants for management		
		Nitrogen	Pesticides	Sediment
Cape York	LOW			
Wet Tropics	VERY HIGH	✓	✓	
Burdekin	HIGH	✓*	✓	✓
Mackay Whitsunday	MODERATE	✓	✓	
Fitzroy	HIGH		✓	✓
Burnett Mary	UNCERTAIN**			✓





Implementation

- Focus moves to implementation
- Roll out of BMPs and grants
- Ongoing extension
- Implementation will require:
 - **Targeting – practices and areas**
 - **Coordinating – Regional and GBR-wide**
 - **Communicating – Multiple partners**





Paddock to Reef Program – Future directions



Australian Government

www.reefplan.qld.gov.au



Queensland Government



P2R Program Design 2013-18

- Program review was completed in late 2012.
- ✓ Governments have recommitted funding.
- ✓ Governments committed to timely delivery of report cards and local scale information.
- **Program Design 2013-18** is currently being prepared.
 - Technical - What, when and how
 - Processes – communication, coordination
 - Management – Milestones and outputs.





Paddock to Reef Program funding

Component	AG funding	QG funding
Management practice adoption	★	★
Paddock monitoring	★	★
Paddock modelling	★	★
Wetlands, riparian and groundcover		★
Catchment monitoring		★
Catchment modelling		★
Marine monitoring	★	





Report Cards

- 2010 (Second) Report Card released in April 2013
- 2011 (Third) Report Card released in July 2013
- A combined 2012/13 Report Card to be released by June next year

Grazing

Proportion of graziers who adopted improved practices between 2009 and 2011.
Target: 50 per cent by 2013



36%

Sugarcane

Proportion of growers who adopted improved practices between 2009 and 2011.
Target: 80 per cent by 2013



30%

Horticulture

Proportion of producers who adopted improved practices between 2009 and 2011.
Target: 80 per cent by 2013



47%

Groundcover

Late dry season groundcover as at 2010-2011.
Target: 50 per cent by 2013



92%

Nitrogen

Reduction in annual average total nitrogen load between 2009 and 2011.
Target: 50 per cent by 2013



13%

Sediment

Reduction in annual average sediment load between 2009 and 2011.
Target: 20 per cent by 2020



6%

Pesticides

Reduction in annual average pesticide load between 2009 and 2011.
Target: 50 per cent by 2013



31%

Mackay Whitsunday

Covers an area of 9000 square kilometres. The main agricultural land uses are grazing and sugarcane. Moderate risk from pesticides from sugarcane.





P2R Program design 2013-18

- **Management practices**
- Paddock modelling
- **Paddock monitoring**
- Riparian vegetation
- **Wetlands condition** and extension
- Groundcover
- **Catchment loads monitoring**
- Catchment modelling
- **Marine monitoring program.**





P2R Program 2013-18

Management practices

- Revise the sugarcane ABCD management practice framework
 - Focus on the key practices from a water quality outcomes perspective – may be useful for prioritising investment
 - Disaggregate to ensure maximum usefulness to model outcomes.
- Establish a database and reporting system that supports Reef Rescue and P2R needs.
- Timely delivery with adequate quality assurance.





P2R Program 2013-18

Paddock monitoring sites

- Less monitoring sites
- Enhanced experimental designs
- Targeting key practices
- Maximising usefulness of information
 - Modelling
 - Extension.





P2R Program 2013-18

Wetland functions and values

- Supported by the Queensland Wetlands Programme
- Desktop analysis and field assessments
- Looks at DPSIR elements relevant to wetlands
- Site, landscape and regional scales.





P2R Program 2013-18

Wetland functions and values

- Outputs
 - 2013 baseline and change reported in the report card.
 - The number of wetlands to be assessed depends on
 - Australian Government Funding
 - Regional NRM Body partnerships
 - Delivery model to be determined





P2R Program 2013-18

Catchment loads monitoring

- Still finalising all funding streams
- Nested monitoring between sub catchment, catchment and marine monitoring sites.
- Looking at regional partnerships to maximise coverage.





P2R Program 2013-18

Marine monitoring program

- Still undergoing review
- Considerations:
 - Integration of remote sensed and site specific water quality
 - Nested monitoring sites
 - Monitoring coverage and resolution
 - Reporting metrics.





Questions and comments



Australian Government

www.reefplan.qld.gov.au



Queensland Government