

HIGH PRIORITY TERRESTRIAL TO MARINE SYSTEM REPAIR

PLANE & O'CONNELL BASIN'S



Australian Government

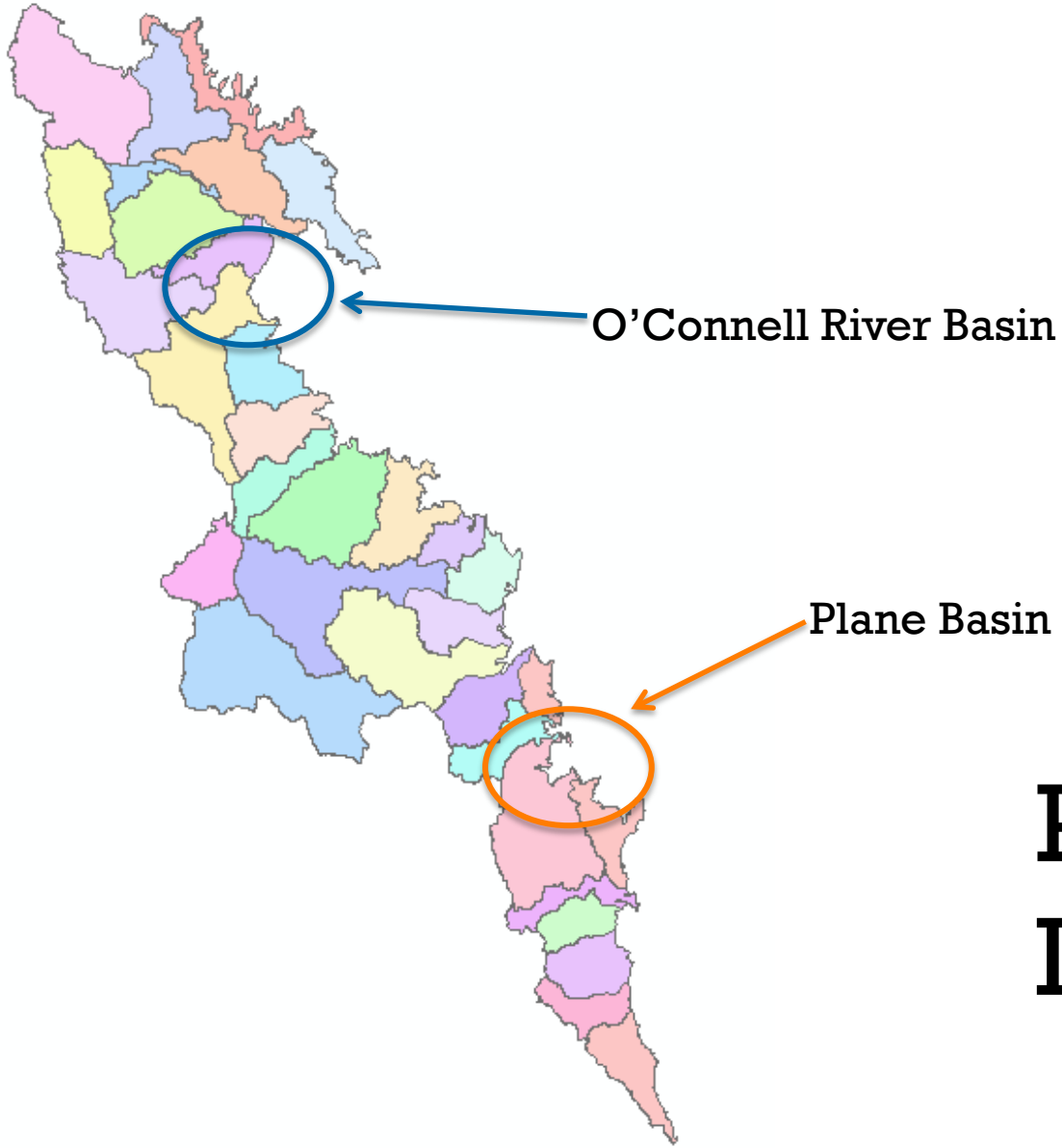


PRIORITY SYSTEM REPAIR LOCATIONS

- Plane Creek basin high priority terrestrial to marine system repair
- O'Connell River basin high priority terrestrial to marine system repair



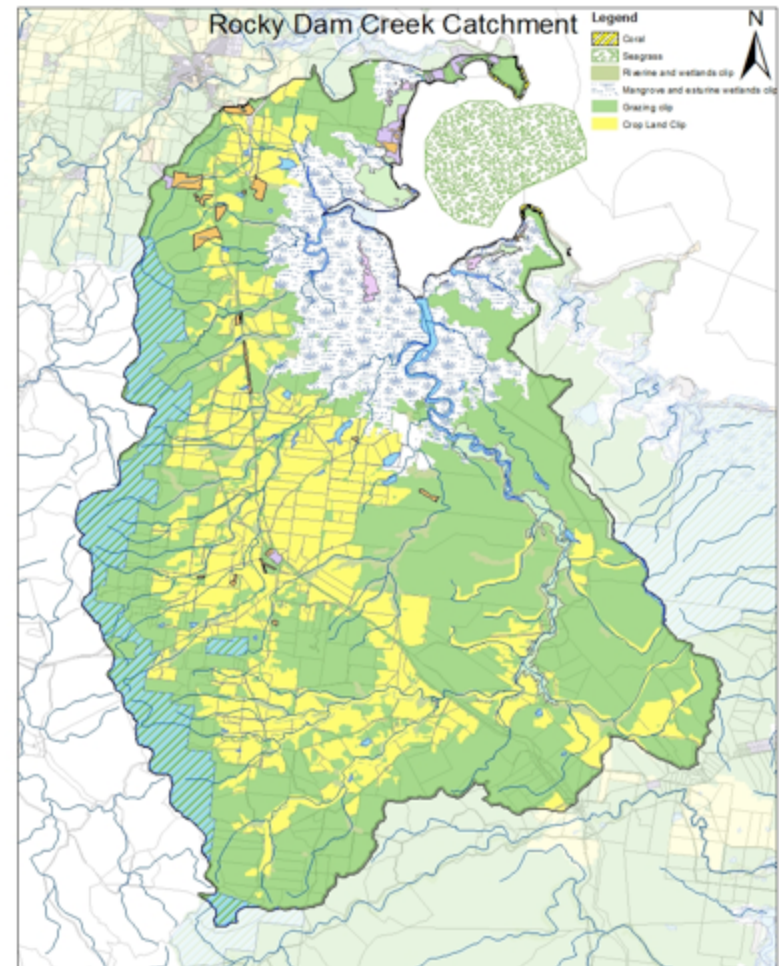
Value rated	System rating (A=excellent, E=poor)					System repair actions	Draft Priority
	Objective 2050	Condition 2007	Target 2014	Achieved 2014	Draft Target 2021		
Fish community	A	C	B	B	A	Flow, Instream Habitat and Riparian Vegetation repair actions priority	L H
Event water quality	B	D	C	C	B	Crop & grazing priority actions	L H
Flow	B	D	C	C	B	Implementation of voluntary irrigation restrictions to maintain waterhole during low flow	L H
Barriers to Migration	A	C	B	B	A	Monitoring & maintenance fishways & incorporate fish passage into new barriers	L H
Instream Habitat	A	C	B	C	B	Restoration & stabilisation of 10 priority reaches	L H
Riparian Vegetation	B	D	C	C	B	Active restoration & connectivity of priority reaches. Grazing management on riparian land	L H
Estuary Modification	A	B	A	B	A	Active restoration & management to encourage recovery, natural habitat & channel stabilisation	L H
Mangroves & Saltmarsh	B	D	C	D	C	Management to encourage recovery	L H



PROJECT LOCATIONS

ROCKY DAM CREEK CATCHMENT SYSTEM REPAIR

- Seagrass (intertidal)
- Coral (fringing)
- Fish (catadromous, marine, freshwater)
- Estuarine Wetlands (saltmarsh, mangroves, mudflats)
- Wetlands (lacustrine, palustrine , flood plains)
- Riverine Wetlands (aquatic habitats, pools, riffles, macrophyte beds, large woody debris)
- Riparian (bank, bed, vegetation)
- Headwater/Uplands
- Protected Areas (connectivity, independencies)



FUNDING STRATEGY

Sandringham Bay – SBA Poor Water Quality

RR agriculture grants

Ince Bay –Moderate WQ

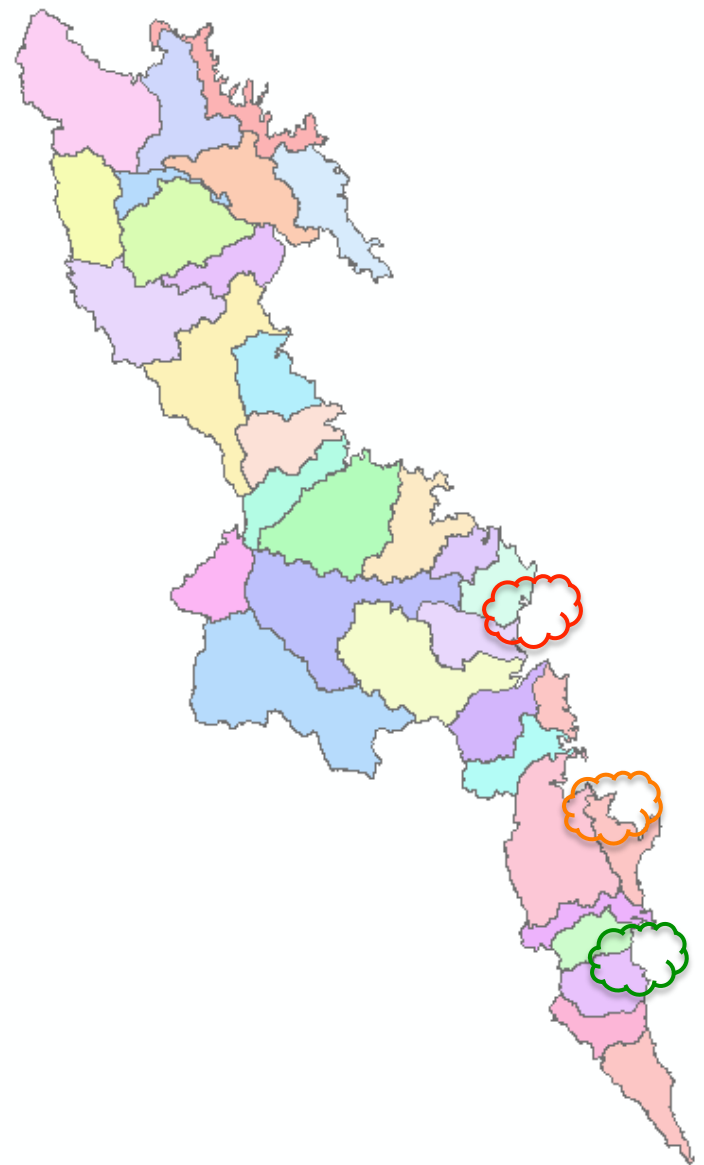
RR agricultural grants

RR system repair

Gillinbin/West Hill – Good Water Quality

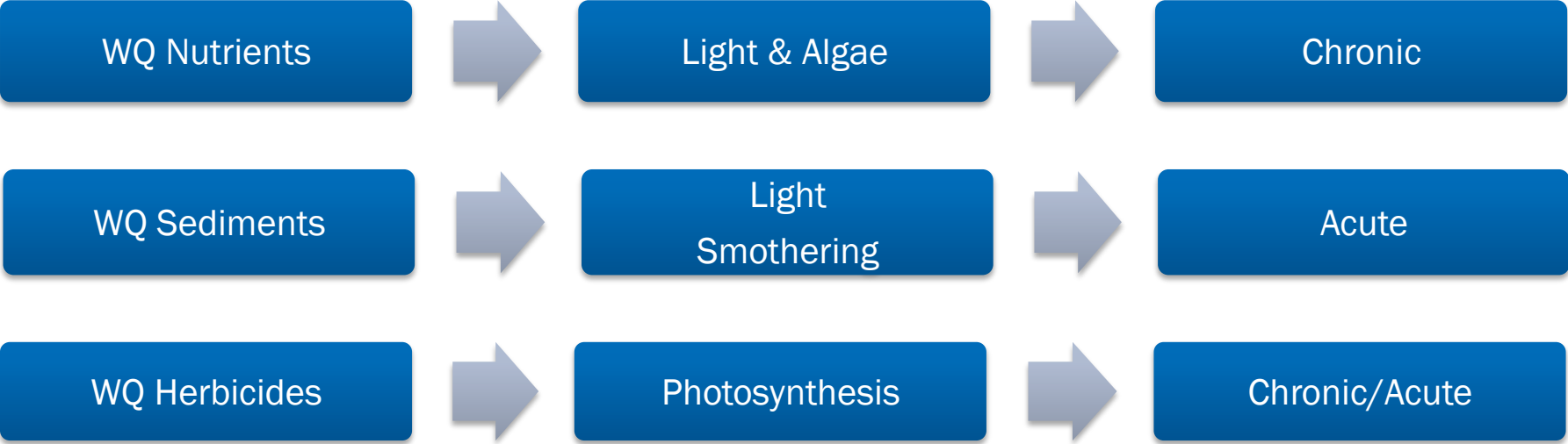
RR agriculture grants

RR system repair



ROCKY DAM CREEK CATCHMENT SYSTEM REPAIR

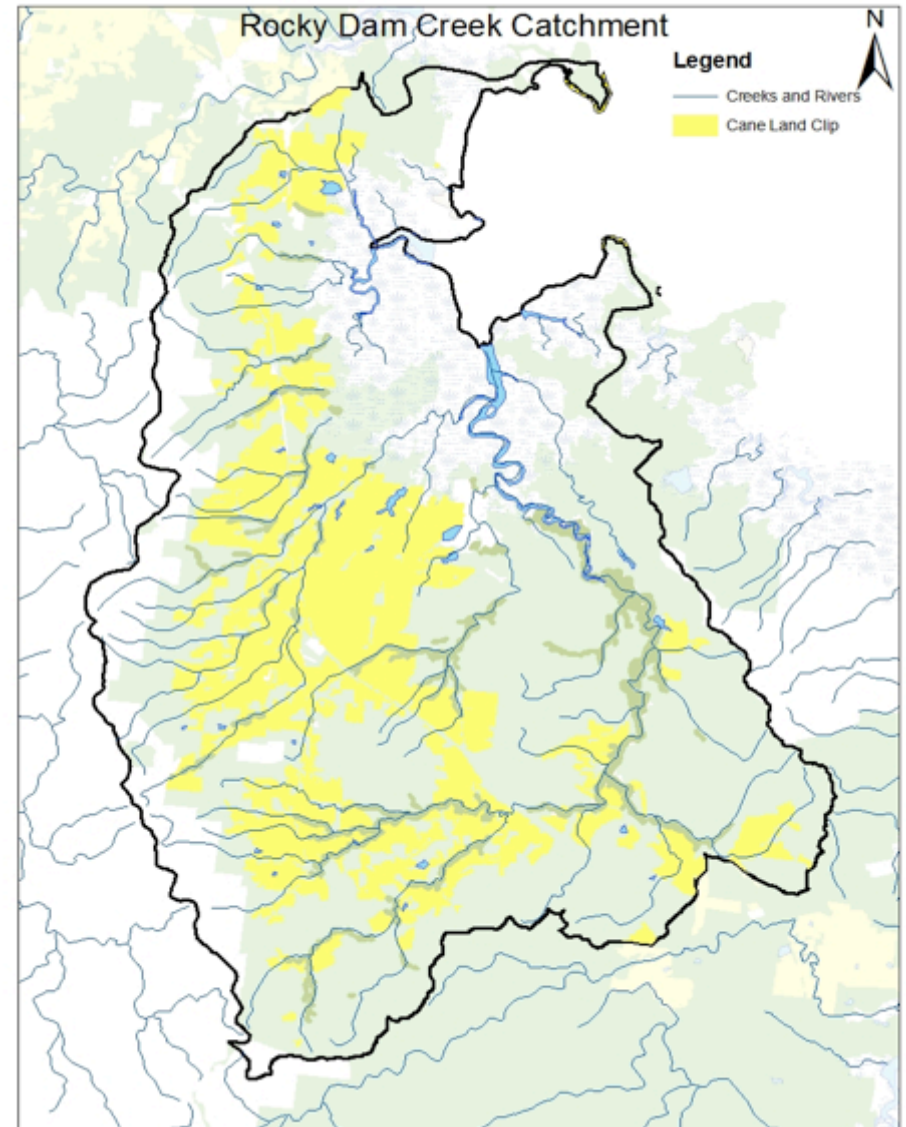
Threats to Seagrass Condition



SEAGRASS

Cane Land Pollutants:

- Nutrients
- Sediment
- Pesticides



SEAGRASS

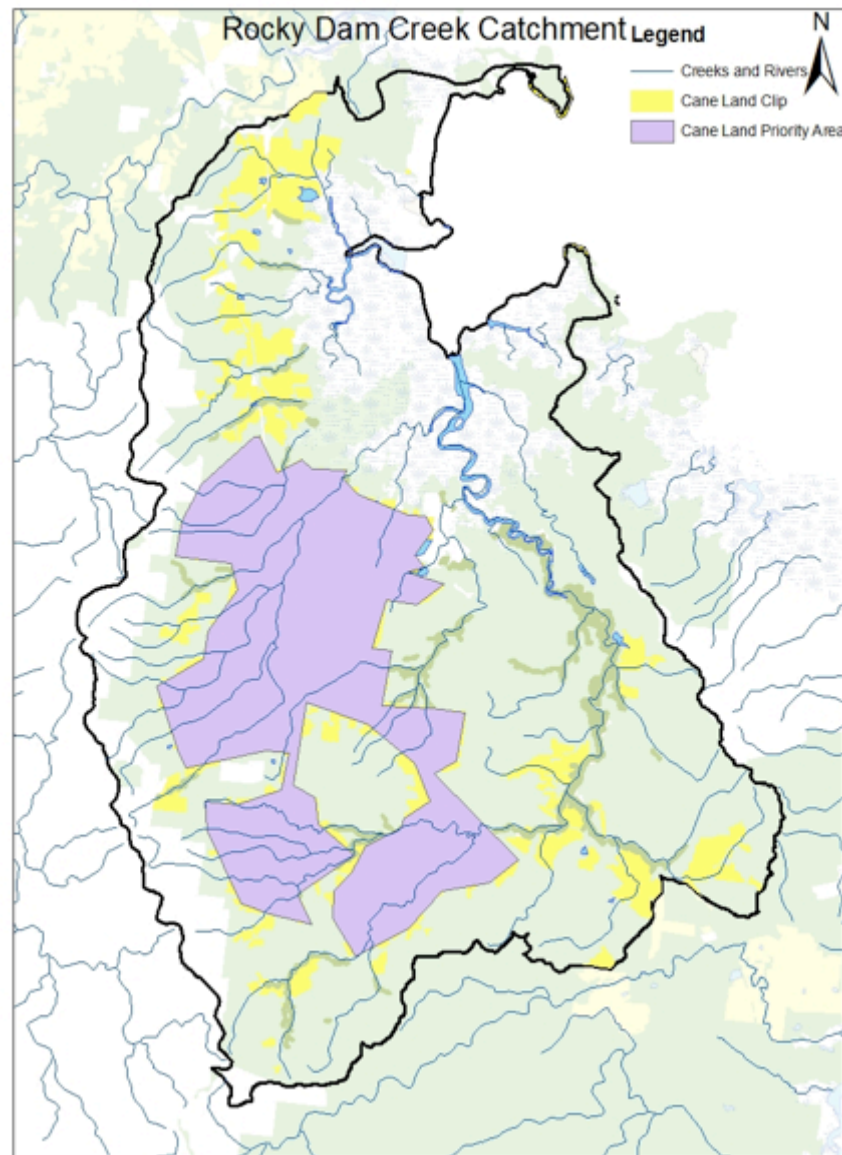
Cane Land Pollutant Remediation
Activities

A & B Nutrient Management Activities

A & B Soil Management Activities

A & B Pesticide Management

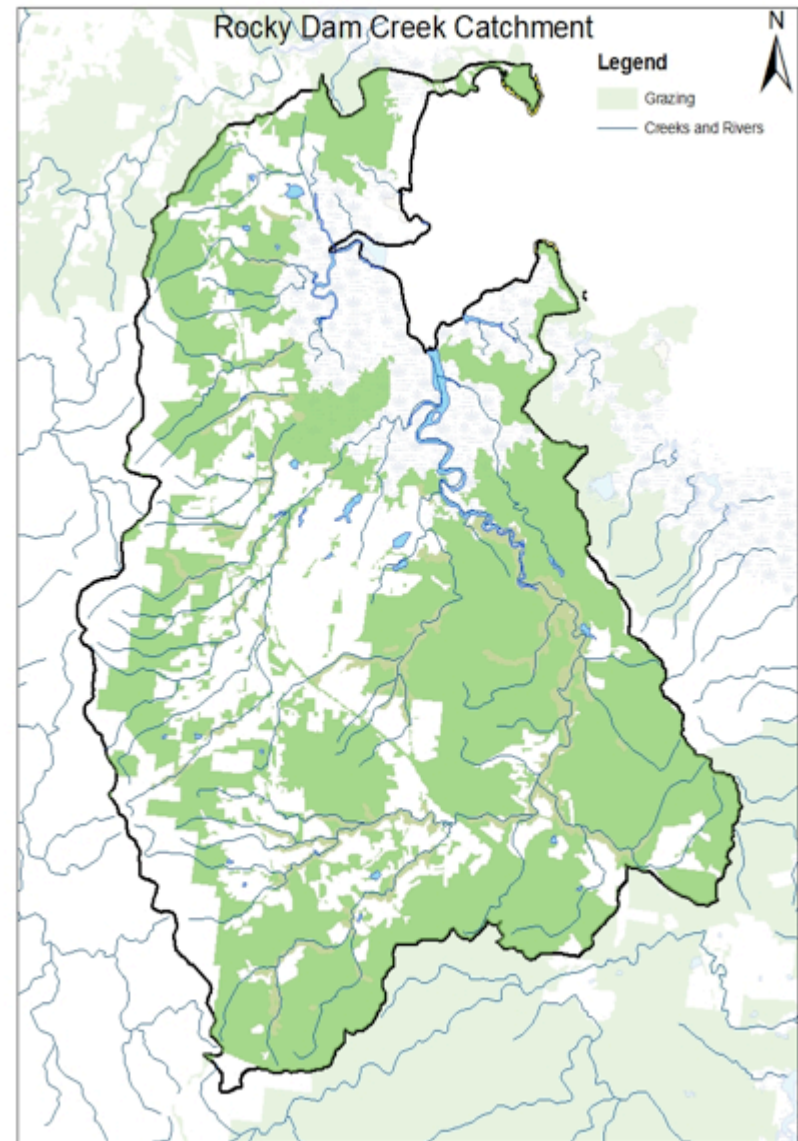
Activities funded by Reef Rescue
Agricultural Grants



SEAGRASS

Grazing Land Pollutants:

- Nutrients
- Sediment

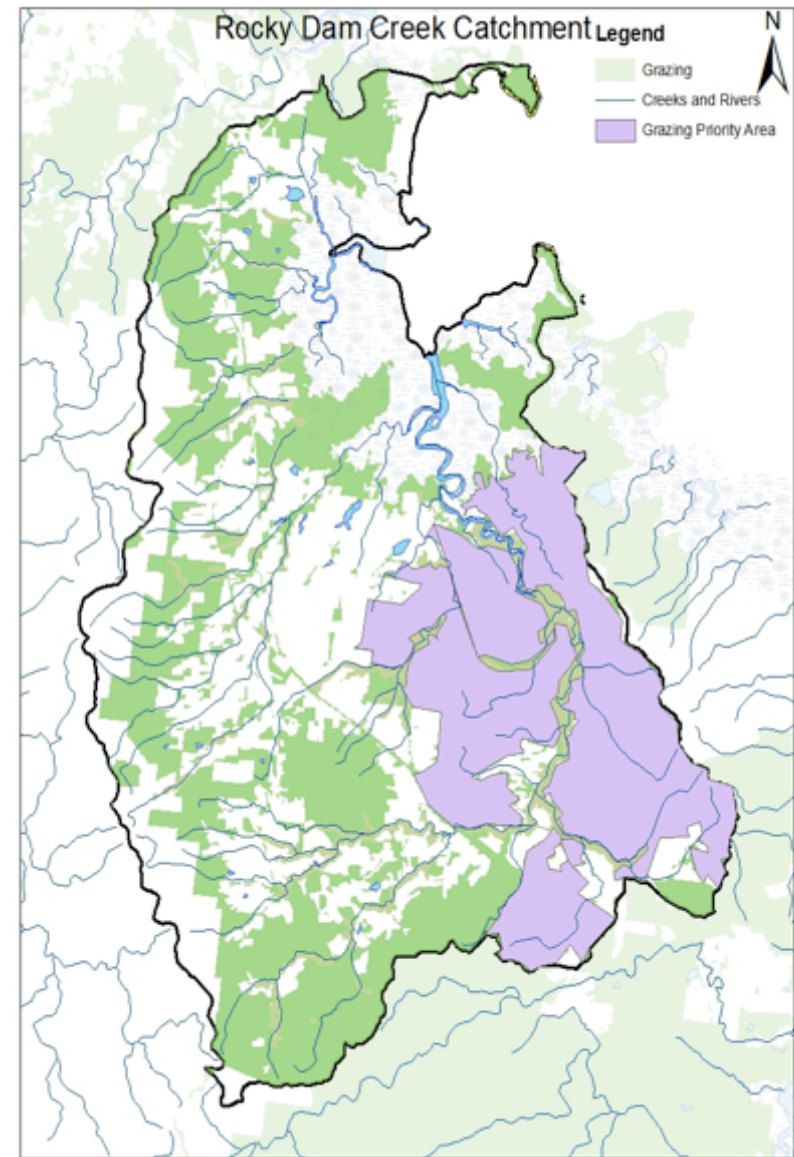


SEAGRASS

Grazing Land Pollutant Remediation Activities

- A & B Nutrient Management Activities
- A & B Soil Management Activities

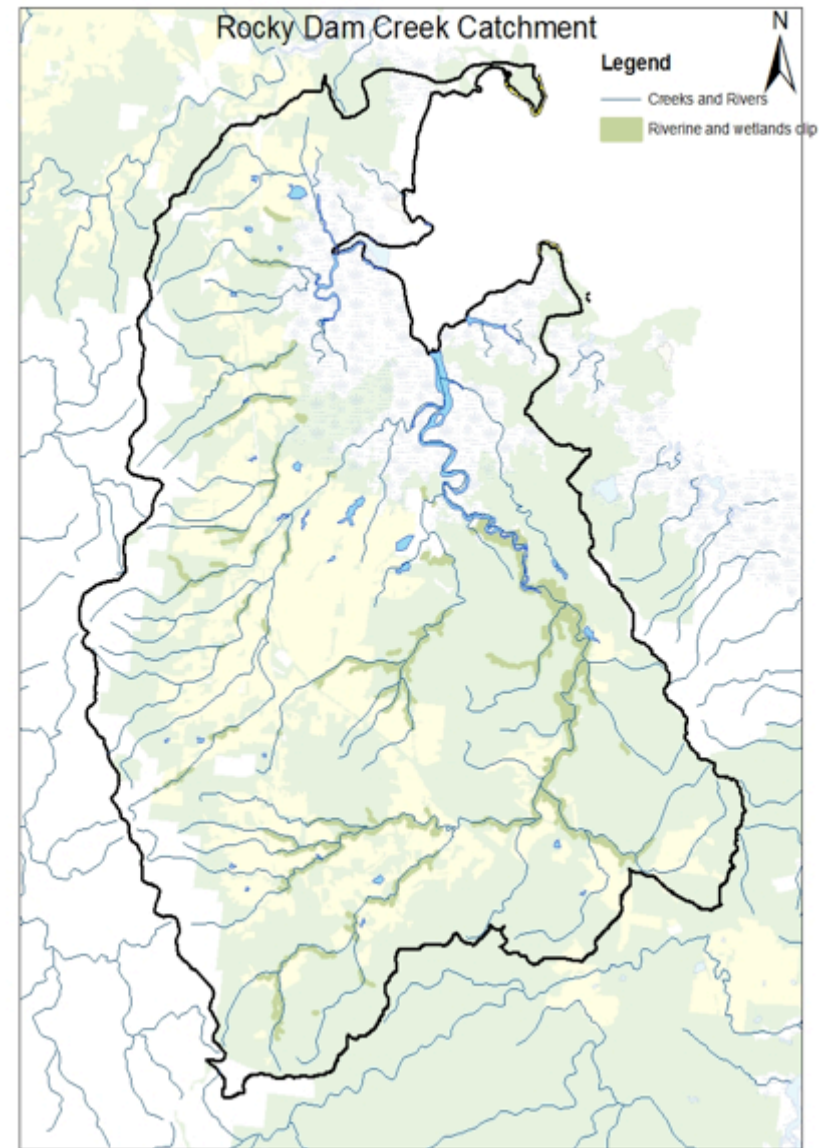
Activities funded by Reef Rescue
Agricultural Grants



SEAGRASS

Riverine and Wetland Pollutants:

- Sediment

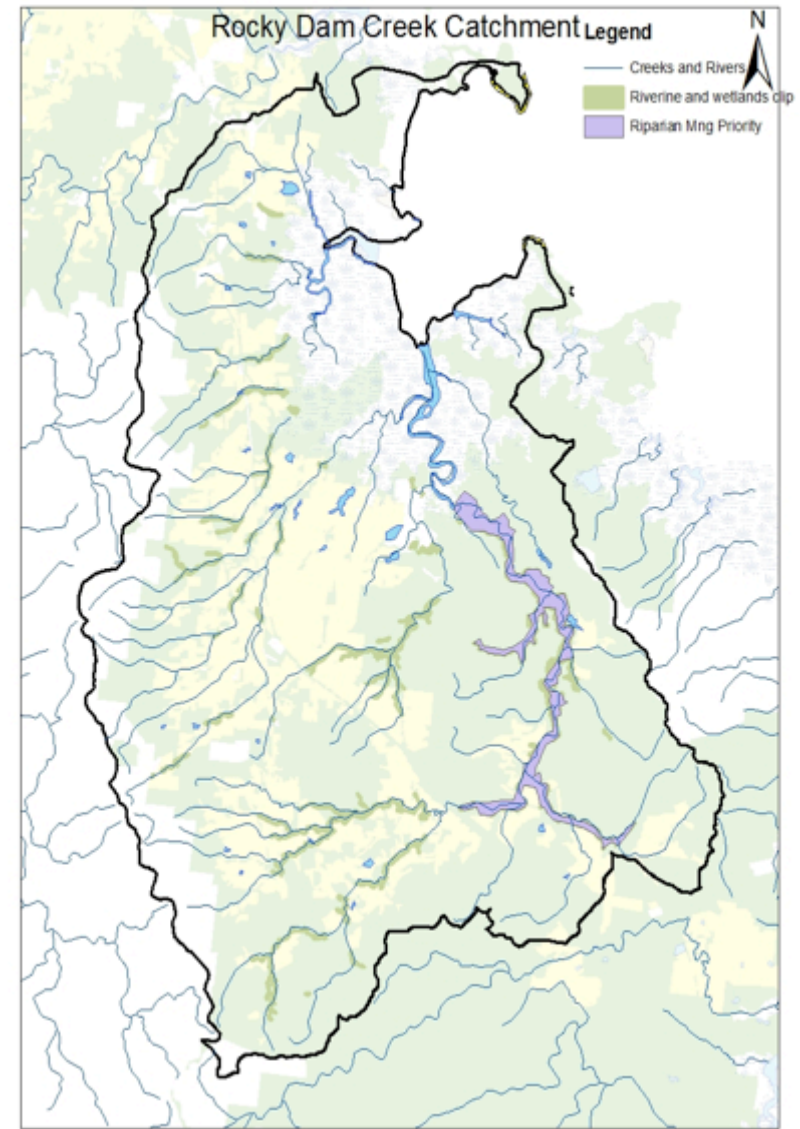


SEAGRASS

Riverine Wetland Pollutant Remediation Activities

- Riparian Fencing
- Off stream watering
- Feral species control
- Re-vegetation

Activities funded by Reef Rescue
Agricultural Grants & System Repair
Grants

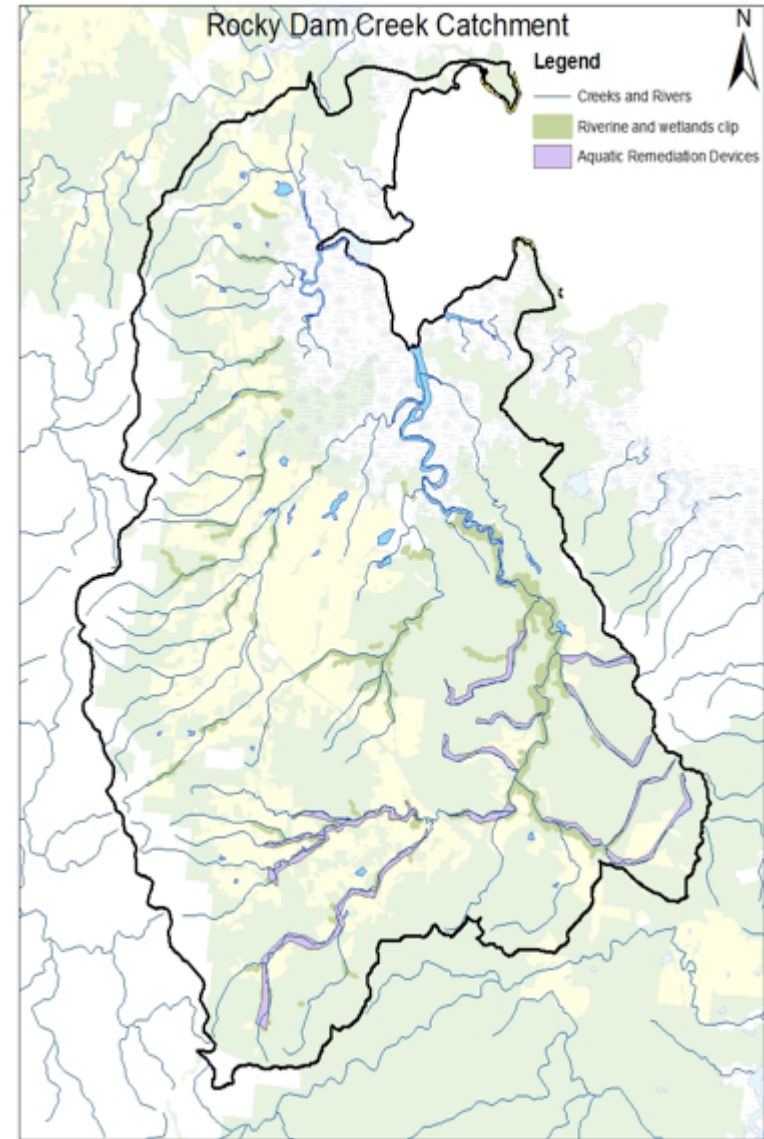


SEAGRASS

Riverine Wetland Pollutant Remediation Activities

- Channel Reinstatement
- Bed Control Structures (Cross vane weirs and sills)
- Bank Remediation Structures (Log Jams, groins and LWD)

Activities funded by Reef Rescue System Repair Grants



System Repair implementation activities have been prioritised with those that:

- Provide benefits to multiple ecosystems
- Have the greatest cost benefit ratio
- Leverage funding (landholder cash and in-kind)

FISH WAYS



LOG JAMS



CROSS VAINS



BANK STABILISATION (WITH LUNKERS)





THANK YOU

